



**Current transformer for earth-leakage circuit-breaker inner diameter 35mm**

**Part no.** PFR-W-35  
**Catalog No.** 285600  
**EL-Nummer (Norway)** 0004365086

**Delivery program**

Description			In combination with PFR residual current relay not UL/CSA approved
Diameter	∅	mm	35
Rated operational voltage	U <sub>e</sub>	V AC	690 V 50/60 Hz
<b>Notes</b>			
incl. screw fixing			
Alternative: fixing clip for DIN mounting rail			
<b>Design note:</b>			
The current transformer diameter must be selected 1.5 times larger than the envelope diameter of the passed through conductor.			

**Technical data**

**Electrical**

Standards		IEC
Rated voltage of the relay contact	V AC/DC	690V (50/60 Hz)

**Mechanical**

Mounting		Incl. fixing clip for DIN-rail mounting
----------	--	---

**Design verification as per IEC/EN 61439**

IEC/EN 61439 design verification		
10.2 Strength of materials and parts		
10.2.2 Corrosion resistance		Meets the product standard's requirements.
10.2.3.1 Verification of thermal stability of enclosures		Meets the product standard's requirements.
10.2.3.2 Verification of resistance of insulating materials to normal heat		Meets the product standard's requirements.
10.2.3.3 Verification of resistance of insulating materials to abnormal heat and fire due to internal electric effects		Meets the product standard's requirements.
10.2.4 Resistance to ultra-violet (UV) radiation		Meets the product standard's requirements.
10.2.5 Lifting		Does not apply, since the entire switchgear needs to be evaluated.
10.2.6 Mechanical impact		Does not apply, since the entire switchgear needs to be evaluated.
10.2.7 Inscriptions		Meets the product standard's requirements.
10.3 Degree of protection of ASSEMBLIES		Does not apply, since the entire switchgear needs to be evaluated.
10.4 Clearances and creepage distances		Meets the product standard's requirements.
10.5 Protection against electric shock		Does not apply, since the entire switchgear needs to be evaluated.
10.6 Incorporation of switching devices and components		Does not apply, since the entire switchgear needs to be evaluated.
10.7 Internal electrical circuits and connections		Is the panel builder's responsibility.
10.8 Connections for external conductors		Is the panel builder's responsibility.
10.9 Insulation properties		
10.9.2 Power-frequency electric strength		Is the panel builder's responsibility.
10.9.3 Impulse withstand voltage		Is the panel builder's responsibility.
10.9.4 Testing of enclosures made of insulating material		Is the panel builder's responsibility.
10.10 Temperature rise		The panel builder is responsible for the temperature rise calculation. Eaton will provide heat dissipation data for the devices.
10.11 Short-circuit rating		Is the panel builder's responsibility. The specifications for the switchgear must be observed.
10.12 Electromagnetic compatibility		Is the panel builder's responsibility. The specifications for the switchgear must be observed.

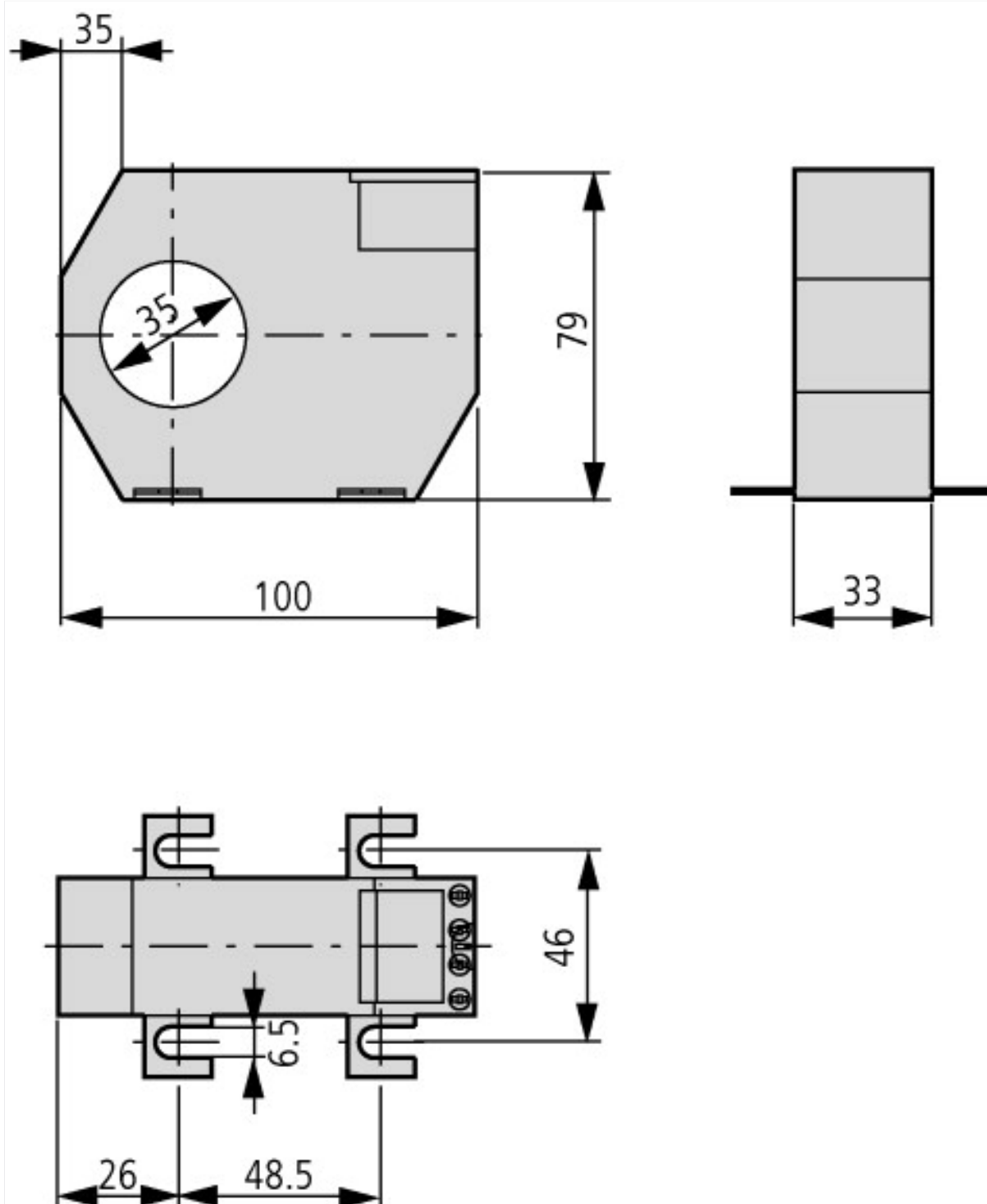
## Technical data ETIM 7.0

Low-voltage industrial components (EG000017) / Residual current release for power circuit breaker (EC001021)

Electric engineering, automation, process control engineering / Low-voltage switch technology / Circuit breaker (LV < 1 kV) / Fault current switch for circuit breakers (ecl@ss10.0.1-27-37-04-11 [AKF009013])

Rated control supply voltage $U_s$ at AC 50HZ	V	0 - 0
Rated control supply voltage $U_s$ at AC 60HZ	V	0 - 0
Rated control supply voltage $U_s$ at DC	V	0 - 0
Rated fault current	A	0 - 0
Max. power on-delay time	ms	0
Delay adjustable		No
Max. rated operation voltage $U_e$	V	0

## Dimensions



## Additional product information (links)

**IL01219036Z (AWA1230-2214) Residual-current relay: converter for earth-leakage circuit-breaker**

IL01219036Z (AWA1230-2214) Residual-current relay: converter for earth-leakage circuit-breaker

[https://es-assets.eaton.com/DOCUMENTATION/AWA\\_INSTRUCTIONS/IL01219036Z2011\\_01.pdf](https://es-assets.eaton.com/DOCUMENTATION/AWA_INSTRUCTIONS/IL01219036Z2011_01.pdf)