


Approved for intrinsic fire resistance, material: Sheet steel



FK 5000

- Communication junction box E30
- for the installation of connecting device for telecommunications

IP
55

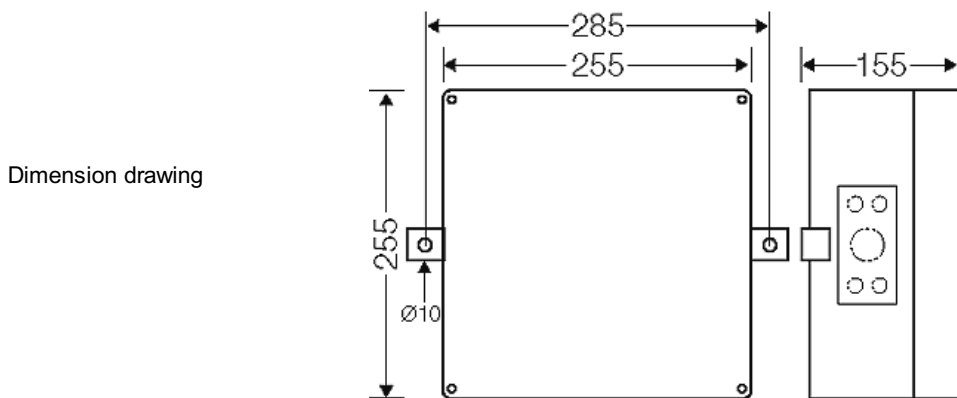
□

E30


- without terminals
- with mounting brackets for mounting a maximum of 2 connecting devices for telecommunications
- intrinsic fire resistance in accordance with DIN 4102-12 (German standard) in combination with function-retaining cables
- cable entry via integrated elastic membranes
- cable entry on 4 sides each 1 x up to Ø 36 mm and 4 x up to Ø 14 mm
- the attached screw anchors must be used for concrete ≥ C20/25, B25 up to ≤ C50/60, B55
- the use of this equipment requires the approval from the building and regulatory authorities for the individual case
- general approval by the German building authorities DIBt: Z-86.1-37, Celsion fire protection systems, download at www.hensel-electric.de > FK 5000 - documents
- colour: orange, RAL 2003

material	Sheet steel, powder-coated
degree of protection	IP 55
height	255 mm
width	255 mm
depth	160 mm
weight	5,97 kg
in accordance with	intrinsic fire resistance E 30 in accordance with DIN 4102 part 12

Drawings



Approved for intrinsic fire resistance, material: Sheet steel



FK 5000

- Communication junction box E30
- for the installation of connecting device for telecommunications

IP
55

□

E30

Operating and ambient conditions

Application area	Suitable for indoor installation and outdoor installation, protected against weather influences
Ambient temperature	Average value over 24 hours + 35 °C Maximum value + 40 °C Minimum value - 25 °C
Relative humidity	50% at 40° C short-time 100% at 25° C
Degree of protection against mechanical load	IK10 (20 Joule)
Toxic behaviour	Sheet steel, powder-coated halogen-free "halogen-free" in accordance with the examination of the cables and insulated wires - corrosiveness of fumes - as per IEC 60754-2