

# Assembly Connections for POINT I/O and ArmorPOINT I/O EtherNet/IP Adapters

Catalog Numbers Bulletins 1734 and 1738



## Important User Information

Read this document and the documents listed in the additional resources section about installation, configuration, and operation of this equipment before you install, configure, operate, or maintain this product. Users are required to familiarize themselves with installation and wiring instructions in addition to requirements of all applicable codes, laws, and standards.

Activities including installation, adjustments, putting into service, use, assembly, disassembly, and maintenance are required to be carried out by suitably trained personnel in accordance with applicable code of practice.

If this equipment is used in a manner not specified by the manufacturer, the protection provided by the equipment may be impaired.

In no event will Rockwell Automation, Inc. be responsible or liable for indirect or consequential damages resulting from the use or application of this equipment.

The examples and diagrams in this manual are included solely for illustrative purposes. Because of the many variables and requirements associated with any particular installation, Rockwell Automation, Inc. cannot assume responsibility or liability for actual use based on the examples and diagrams.

No patent liability is assumed by Rockwell Automation, Inc. with respect to use of information, circuits, equipment, or software described in this manual.

Reproduction of the contents of this manual, in whole or in part, without written permission of Rockwell Automation, Inc., is prohibited

Throughout this manual, when necessary, we use notes to make you aware of safety considerations.



**WARNING:** Identifies information about practices or circumstances that can cause an explosion in a hazardous environment, which may lead to personal injury or death, property damage, or economic loss.



**ATTENTION:** Identifies information about practices or circumstances that can lead to personal injury or death, property damage, or economic loss. Attentions help you identify a hazard, avoid a hazard, and recognize the consequence.

---

**IMPORTANT** Identifies information that is critical for successful application and understanding of the product.

---

Labels may also be on or inside the equipment to provide specific precautions.



**SHOCK HAZARD:** Labels may be on or inside the equipment, for example, a drive or motor, to alert people that dangerous voltage may be present.



**BURN HAZARD:** Labels may be on or inside the equipment, for example, a drive or motor, to alert people that surfaces may reach dangerous temperatures.



**ARC FLASH HAZARD:** Labels may be on or inside the equipment, for example, a motor control center, to alert people to potential Arc Flash. Arc Flash will cause severe injury or death. Wear proper Personal Protective Equipment (PPE). Follow ALL Regulatory requirements for safe work practices and for Personal Protective Equipment (PPE).

---

	Important User Information . . . . .	2
<b>Table of Contents</b>	. . . . .	5
	Why Read This Manual . . . . .	5
	Who Should Use This Manual . . . . .	5
	Additional Resources . . . . .	5
	 <b>Chapter 1</b>	
<b>Introduction</b>	About Assembly Connections . . . . .	9
	Choose a Connection. . . . .	9
	Data Headers . . . . .	10
	Listen Only Connections . . . . .	10
	Connection Points . . . . .	10
	 <b>Chapter 2</b>	
<b>Configuration</b>	About This Chapter . . . . .	13
	Configure the Connection . . . . .	13
	Chassis Size . . . . .	13
	Data Alignment . . . . .	13
	Individual Module Configuration Options . . . . .	15
	Module Configuration Sent with the Connection Request . . . . .	15
	Module Configuration with RSNetWorx for DeviceNet . . . . .	16
	Calculate the Connection Size . . . . .	16
	Connection Size Calculation Example . . . . .	17
	 <b>Chapter 3</b>	
<b>Using an Assembly Connection</b>	Use an Assembly Connection with RSNetWorx for EtherNet/IP . . . . .	19
	Use an Assembly Connection with RSLogix5000 . . . . .	23
	Add the Hardware to the I/O Configuration Tree . . . . .	23
	Enter the Connection Parameters . . . . .	24
	Build the Configuration Tag . . . . .	25
	 <b>Chapter 4</b>	
<b>Assembly Structure</b>	Assembly Structure Examples . . . . .	29
	Byte, Word, and Double Word Alignment . . . . .	29
	Fixed Size per Slot Alignment . . . . .	33
	 <b>Chapter 5</b>	
<b>1734/1738 I/O Module Assembly Information</b>	Module Assembly Information . . . . .	39
	Discrete Modules . . . . .	39
	Analog and Specialty I/O Modules . . . . .	40
	Data Format . . . . .	41
	Module Specific Details . . . . .	41
	Two-channel Discrete Input Modules . . . . .	41
	Four-channel Discrete Input Modules . . . . .	42
	Eight-channel Discrete Input Modules . . . . .	43

Two-channel Discrete Output Modules with Status ..... 44  
Two-channel Discrete Output Modules ..... 45  
Four-channel Discrete Output Modules with Status ..... 46  
Four-channel Discrete Output Modules ..... 46  
Eight-channel Discrete Output Modules with Status ..... 47  
Eight-channel Discrete Output Modules ..... 48  
Four-channel Discrete Diagnostic Input Modules ..... 48  
Two-channel Relay and AC Output Modules ..... 49  
Four-channel Relay and AC Output Modules ..... 50  
Sixteen-channel Discrete Diagnostic Input Modules ..... 50  
Sixteen-channel Discrete Output Modules ..... 51  
Eight-channel Configurable Discrete Input/Output Modules . 51  
Very High Speed Counter Modules ..... 52  
Counter Modules ..... 54  
Two-channel Analog Input Modules ..... 56  
Four-channel Analog Input Modules ..... 57  
Eight-channel Analog Input Modules ..... 60  
Two-channel Analog Output Modules ..... 64  
Four-channel Analog Output Modules ..... 66  
Two-channel RTD Input Modules ..... 68  
Two-channel Thermocouple Input Modules ..... 70  
Synchronous Serial Interface Modules ..... 71  
Address Reserve Module ..... 73  
ASCII Interface Modules ..... 73

**Index**

Read this preface to familiarize yourself with the rest of the manual. It provides information concerning:

- the purpose of this manual
- related documentation
- conventions used in this manual

## Why Read This Manual

This manual is a reference guide for using Assembly Connections with POINT I/O and ArmorPOINT I/O modules.

## Who Should Use This Manual

You must be able to program and configure industrial automation controllers and I/O to use the connections specified in this manual. You should also be familiar with the POINT I/O or ArmorPOINT I/O families of product to use these connections.

We assume that you are familiar with the material presented in this manual. If you are not, refer to product-specific documentation before you attempt to use this manual. Related documentation for Rockwell Automation products is listed in the table below.

## Additional Resources

These documents contain additional information concerning related products from Rockwell Automation.

Resource	Description
Industrial Automation Wiring and Grounding Guidelines, publication <a href="#">1770-4.1</a>	Provides general guidelines for installing a Rockwell Automation industrial system.
RSLogix 5000 software online help	An online help system that accompanies the RSLogix 5000 programming software package.
Product Certifications website, <a href="http://www.rockwellautomation.com/global/certification/overview.page">http://www.rockwellautomation.com/global/certification/overview.page</a>	Provides declarations of conformity, certificates, and other certification details.

You can view or download publications at <http://www.rockwellautomation.com/global/literature-library/overview.page>. To order paper copies of technical documentation, contact your local Allen-Bradley distributor or Rockwell Automation sales representative.

**Notes:**

This manual contains new and updated information as indicated in the following table.

<b>Topic</b>	<b>Page</b>
Removed Troubleshooting Connection Size Errors	<a href="#">18</a>
Updated Table 17 - Configuration Assembly	<a href="#">37</a>
Updated Table 40 - Configuration Assembly Instance 123	<a href="#">48</a>
Updated Table 43 - Configuration Assembly Instance 103	<a href="#">48</a>
Corrected catalog numbers listed in Four-channel Relay and AC Output Modules	<a href="#">50</a>
Updated Table 54 - Configuration Assembly Instance 103	<a href="#">52</a>
Corrected catalog numbers listed in Very High Speed Counter Modules	<a href="#">52</a>
Updated Table 69 - Configuration Assembly Instance 123	<a href="#">60</a>
Corrected Title of Table 76 - Consumed Output Data Assembly 102	<a href="#">68</a>
Corrected catalog numbers listed in Two-channel Thermocouple Input Modules	<a href="#">70</a>

**Notes:**



## Introduction

### About Assembly Connections

This document describes Assembly connections, a new connection type for POINT I/O and ArmorPOINT I/O EtherNet/IP adapters. These adapters currently support Rack Optimized connections between ControlLogix or CompactLogix controllers and the discrete I/O modules in the chassis.

They are also capable of bridging direct connections between any EtherNet/IP-capable connection originator and the I/O modules, via the backplane. This new functionality being presented will permit the exchange of data between an originator and all POINT I/O modules present in the chassis in one connection.

This new Assembly connection is mutually exclusive to other connection types, for example, Rack Optimized or Direct to module connections. In other words, if this connection is in use by one connection originator, other originators are prevented from making Rack Optimized or Direct Connections to the modules in the same chassis. Furthermore, the connection is all-inclusive; every module present in the backplane participates in the connection.

The I/O data that is exchanged with the adapter takes the following form:

**Table 1 - Adapter Data Exchange**

<b>T → O produced I/O data</b>	<b>O → T consumed I/O data</b>
64-bit Status header	Run/Idle header
Slot 1 data	Slot 1 data
Slot 2 data	Slot 2 data
:	:
:	:
Slot N <sup>(1)</sup> data	Slot N data

(1) N is the number of I/O modules

The 64-bit Status header is optional and the packing of the data is dependent on the selected alignment choice. The exact method for determining the data structure is covered in the following sections.

### Choose a Connection

The Assembly connection supports an optional 64-bit status header and also supports requests from listen-only originators.

## Data Headers

In the Target to Originator (T → O) direction, the adapter can be configured to produce a status header for the connection. The header consists of an 8-byte bitmap, where bits 1 - 63 indicate the health of each of the 63 possible backplane connections. This is similar to existing Rack Optimized connections. A "1" indicates that a module is not connected or that slot is not populated. A "0" indicates that the module is actively participating in the connection. Currently, Bit 0 is reserved and should be ignored.

When the header is used, modules may be removed and reinserted without breaking the I/O connection to the adapter. Modules not present or that are failed are reflected in the status header.

If the optional status header is not included, the adapter cannot support RIUP without breaking the I/O connection. If any one I/O module fails or is removed, the adapter will break the connection to the connection originator. Since no status is provided, this is the only way to reflect the fact that a problem exists with the I/O modules on the backplane.

In the Originator to Target (O → T) direction the adapter supports the 4-byte Run/Idle header. Sending a "1" indicates that the controller is in the Run mode and that the adapter should apply the data that was just received. Sending a "0" indicates that the controller is in program or idle mode and that the adapter should put the I/O modules in their idle mode.

## Listen Only Connections

Using an Assembly connection will allow multiple originators to consume data from the POINT I/O system. However, only one owner of the connection is permitted. That one owner will control all output devices present in the chassis as well as the configuration of the connection.

## Connection Points

The following table lists the connection points that are supported for the different connection styles discussed.

**Table 2 - Supported Connection Points for Connection Styles**

Connection	Configuration Connection Point	Consumed Connection Point	Produced Connection Point
Exclusive Owner	102	100	101
Listen-only	102	191	101
Input-only	102	190	101

**Table 2 - Supported Connection Points for Connection Styles**

<b>Connection</b>	<b>Configuration Connection Point</b>	<b>Consumed Connection Point</b>	<b>Produced Connection Point</b>
Owning with no status header	102	100	103
Listen-only with no status header	102	191	103
Input-only with no status header	102	190	103

**Notes:**

## Configuration

### About This Chapter

This chapter describes the various configuration options that you can use to set up assembly connections.

### Configure the Connection

This connection is accepted with or without a configuration assembly present. If a configuration assembly is present, it must contain the following minimum information.

**Table 3 - Minimal Adapter Configuration Assembly**

Byte	Bit 7	Bit 6	Bit 5	Bit 4	Bit 3	Bit 2	Bit 1	Bit 0
Config 0	Reserved (Set to 0)							
Config 1	Reserved (Set to 0)							
Config 2	Reserved (Set to 0)							
Config 3	Reserved (Set to 0)							
Config 4	Chassis size (Low Byte)							
Config 5	Chassis size (High Byte)							
Config 6	Alignment for Produced Assembly (T → 0)							
Config 7	Size per slot (T → 0) (in Bytes)							
Config 8	Alignment for Consumed Assembly (0 → T)							
Config 9	Size per slot (0 → T) (in Bytes)							

### Chassis Size

Before establishing I/O connections, you must configure the 1734 adapters for chassis size. This ensures that the correct number of modules are present in the chassis at power up. The chassis size must include 1 count for the adapter (Chassis Size = number of I/O modules + 1).

### Data Alignment

Some computing devices require data to be aligned on boundaries that are proper for their data type. There are several alignment options available to reduce or prevent shifting operations in the originator:

### *Byte Boundaries*

Each node's I/O data is mapped at the next available byte. Byte data can appear at any address.

### *Word Boundaries*

If a node's I/O data is one byte in length, it is mapped at the next available byte. Otherwise the previous data is padded so that the node's data starts on a 16-bit boundary.

**TIP** This does not mean that every slot occupies two bytes in the image. Word data can only begin on even addresses, for example, 0, 2, 4, 8, 0xA, or 0xC.

### *Double Word Boundaries*

If a node's I/O data is one byte in length, it is mapped at the next available byte. If a node's data is two bytes in length, padding is added to ensure that it is mapped to an even address. If a node's data is greater than 2 bytes in length, padding is added to ensure that the data is mapped to a Double Word boundary.

**TIP** This does not mean that every slot occupies 4 bytes in the image. Double Word data and array data larger than 2 bytes in size must be aligned on addresses ending in 0, 4, 8, and 0xC.

### *Fixed Boundaries*

The fixed boundary allows you to choose the fixed "size per slot" that each module occupies in the I/O data. Mapping size ranges from 1...24 bytes.

The alignment choices are independently selected for each direction; O → T and T → O. If Fixed Boundaries are selected, the Size per Slot choice determines how many bytes are reserved for each slot in the I/O packet. If the size selected is larger than a module's data, that module's data is padded with 0's out to the size selected. If the size selected is smaller than a module's data, that module's data is truncated at the size selected.

When Fixed Boundaries are selected, the formula for mapping is:  $H + (N - 1)(\text{size per slot})$ , where N = slot position and H is the size of the optional status header (8 if used, 0 if not used).

The choice of alignment is highly dependent on the originator used and application-specific requirements.

- If data size is at a premium, Byte alignment is the most efficient choice.
- If the originator can only process data on DINT boundaries (as is the case with RSLogix controllers), then Double Word alignment should be used.

- If ease of programming is desired, the Fixed Boundaries option allows for easy location of the data within the data packet. Additionally the use of Fixed Boundaries along with the 1734-ARM module will allow modules to be added later without having the location of any slot's data change. The ARM module will reserve data space for future modules. Since each slot occupies the same size in the data image, when the ARM module is replaced with a future module, the data boundaries are preserved.

## Individual Module Configuration Options

The request for an Assembly connection is accepted with or without a configuration assembly present. If a configuration assembly is present, it must contain the minimum information presented in the Configuring the Connection section. See [Table 3](#). If individual module configuration is required, it can be appended to the end of the minimum configuration structure for any or all modules that require configuration. The construction of this configuration data structure is a manual process.

Alternatively any tool that is capable of sending CIP packets can configure the parameters of individual POINT I/O modules. The configuration is stored locally in the module's non-volatile storage. When the configuration is sent from the connection originator via the connection request, the adapter also stores a copy of this configuration and restores it if that module is ever replaced. This is similar to the Automatic Device Replacement feature of DeviceNet scanners. If the configuration is sent from the connection originator via the connection request, the configuration assembly size is limited to the maximum packet size of 510 bytes. This may be an issue in larger systems that require module configuration. Configuring modules through a separate tool will allow the configuration to be sent to modules individually, effectively eliminating the packet size limitation. Furthermore, the configuration tool of choice may provide a rich graphical user interface, reducing the possibility that configuration is incorrectly entered. One such tool is RSNetWorx for DeviceNet.

## Module Configuration Sent with the Connection Request

Individual module configuration must be manually constructed and appended to the minimal configuration assembly specified in the table Minimal Adapter

Configuration Assembly on page 13. For each module that needs to be configured, the following information must be provided:

**Table 4 - Module Configuration Information**

Field	Data Type	Description
Slot number	USINT	The slot number to identify modules that require configuration data.
Configuration size	USINT	The size, in bytes, of the Configuration Data for the given module. It does not include the size of the first three fields shown here.
Configuration assembly instance	UINT	The adapter reads this field to access the module configuration assembly's instance number.
Configuration data	Array of BYTE	The configuration assembly data as defined by the module's EDS file.

This structure may be repeated for as many modules as necessary until the whole assembly exceeds 509 bytes. The module order is not important as long as all module configuration follows the minimal header information from the table Minimal Adapter Configuration Assembly on page 13.

If any part of the configuration assembly is wrong (either the minimal assembly or a portion directed to an I/O module), the connection request will be rejected with the General Return Code indicating an Error in the Data Segment (0x09). The Extended Error code will indicate the byte offset into the configuration data segment where the error was detected. The Configuration assembly details for all of the 1734 and 1738 I/O modules are presented in Module Assembly Information on page 39.

## Module Configuration with RSNetWorx for DeviceNet

RSNetWorx for DeviceNet provides a rich parameter-based configuration user interface. The POINT I/O and ArmorPOINT I/O adapters have the capability to present their backplane as a DeviceNet subnet to RSLinx. The subnet can be used to bridge configuration data from RSNetWorx for DeviceNet to backplane devices. With this method, all configuration for a POINT I/O backplane can be stored to the DeviceNet network file (.DNT) and restored via this file if necessary.

## Calculate the Connection Size

The I/O assembly size is limited to the maximum size that can be specified in the standard Forward\_Open service (509 bytes). The size needs to be manually calculated based on the alignment choices, inclusion of the optional status header, and the I/O sizes for the modules present in the chassis. The adapter validates the connection size in the forward open against what it calculates from the backplane and the alignment choice. If the two do not match, the connection request is rejected with extended error code 0x0109, Invalid Connection Size.



## Connection Size Calculation Example

The following system will be used to demonstrate the connection size calculation. The adapter's produced size (T → O) must include 8 bytes if the optional status header is included. In some software the consumed size (O → T) does not need to account for the 4 byte Run/Idle header as it is assumed and already included. For the example both header sizes have been included.

**Figure 1 - POINT I/O system example**

Cat #	AE NT	IB 8	IE 2 C	OB 4 E
Slot #	0	1	2	3

Module	Tx size	Rx size
IB8	1 – byte	0
OB4E	1 – byte	1 – byte
IE2C	6 - int - int - byte - byte	0

	T → O alignment	T → O size	O → T alignment	O → T size
1	Byte	16 bytes status 8 bytes slot 1 byte slot 2 int slot 2 int slot 2 byte slot 2 byte slot 3 byte	Byte	5 bytes run /idle 4 bytes slot 3 byte
2	Double Word	19 bytes status 8 bytes slot 1 byte slot 1 pad slot 1 pad slot 1 pad slot 2 int slot 2 int slot 2 byte slot 2 byte slot 3 byte	Double Word	5 bytes run / idle 4 bytes slot 3 byte
3	6 bytes per slot	26 bytes status 8 bytes slot 1 6 bytes slot 2 6 bytes slot 3 6 bytes	1 byte per slot	7 bytes run /idle 4 bytes slot 1 byte slot 2 byte slot 3 byte

In row 1, the data is packed on byte boundaries. This is the most efficient data representation when alignment is not a concern.

In row 2 the data for slot 1 is padded so that slot 2's data began on a Double Word boundary.

In row 3 every slot takes up the selected size per slot regardless of whether that module has any data to produce.

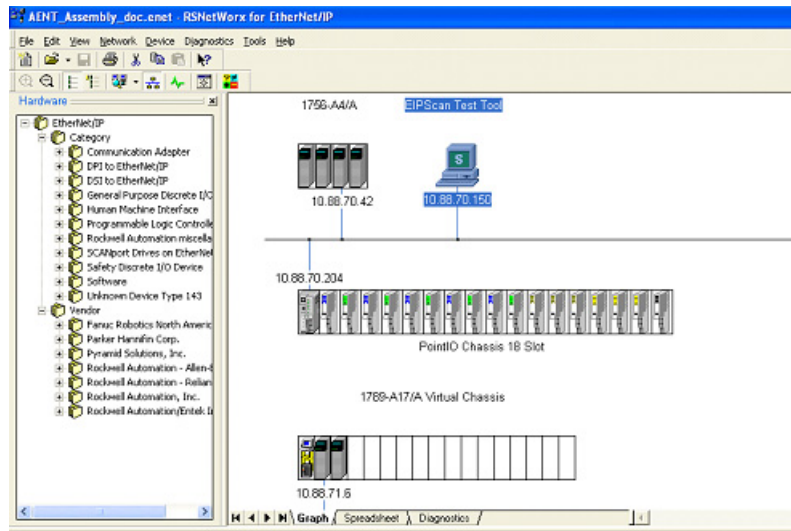
This section touches briefly on data alignment. More comprehensive examples of data alignment are provided in Assembly Structure Examples on page 29.

## Using an Assembly Connection

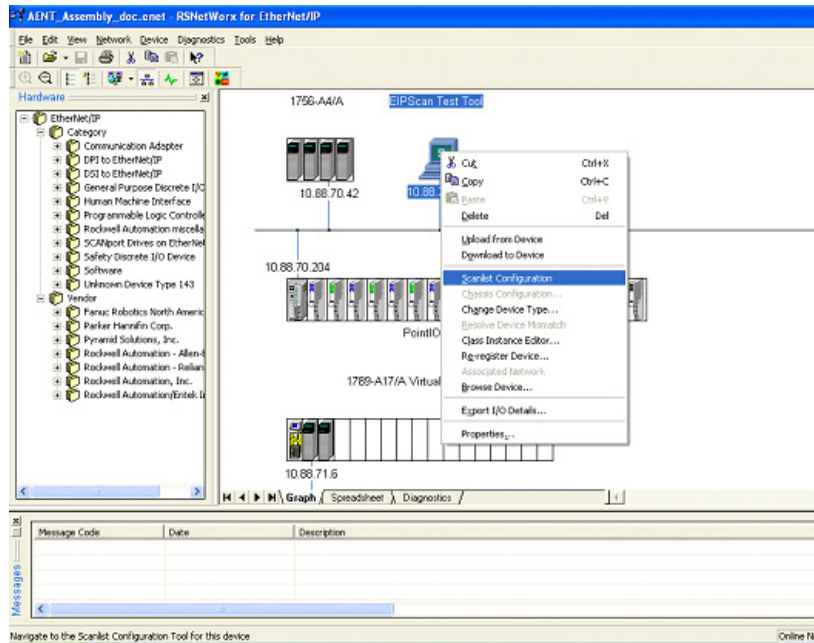
### Use an Assembly Connection with RSNetWorx for EtherNet/IP

This section provides an illustration of the steps needed to configure the Assembly connection using RSNetWorx for EtherNet/IP.

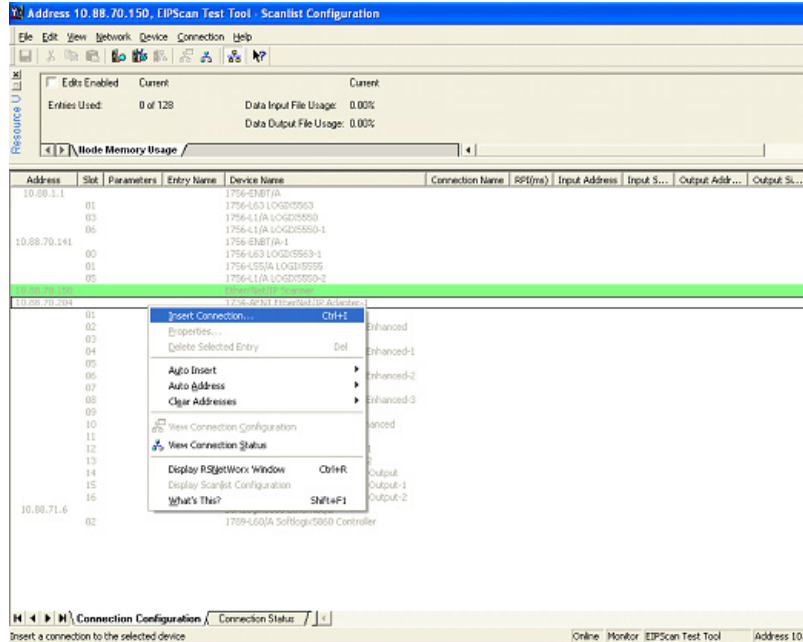
1. Browse the EtherNet/IP network.



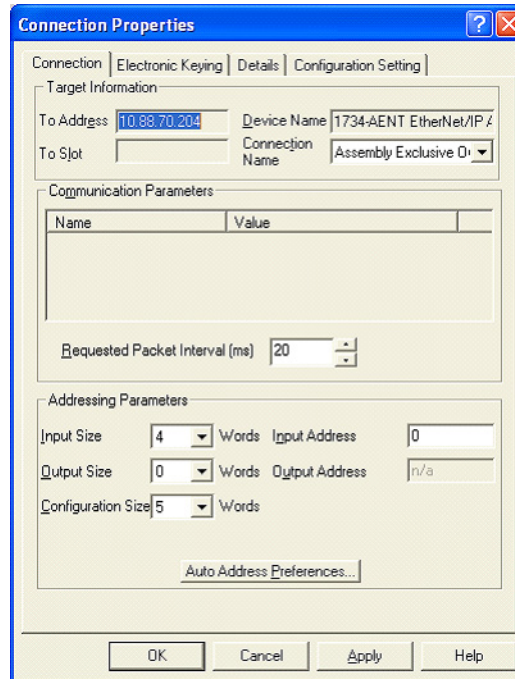
2. Select the connection originator that will make the connection to the 1734-AENT. Right click that device and select Scanlist Configuration to launch the Scanlist Configuration tool.



3. Right click the targeted adapter and select Insert Connection to display the Connection Properties dialog.



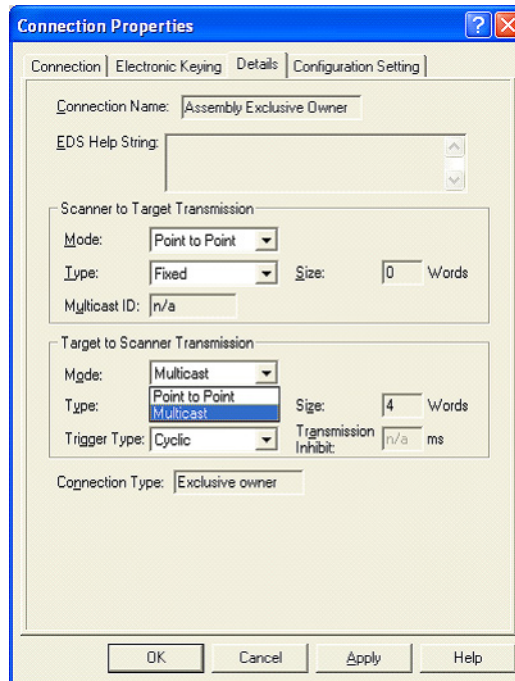
4. On the Connection tab of this dialog, select the connection from the Connection Name pull-down (for example, Exclusive Owner and Listen-Only connections). Listen-Only connections are only accepted if an Exclusive Owner connection already exists.



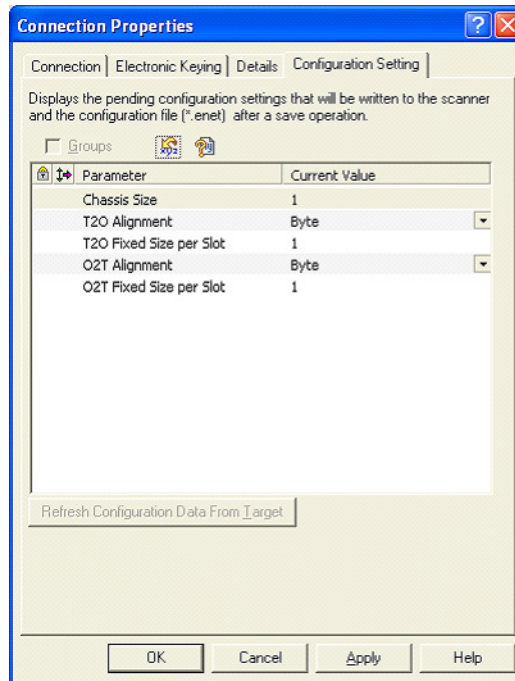
You can also select the Requested Packet Interval and connection sizes. For a full discussion on connections sizes, refer to the Configuration Setting tab step that follows and [Calculate the Connection Size](#). The defaults reflect an empty system (with the adapter only).

**TIP** In RSNetWorx, the 4-byte Run/Idle header is not considered when calculating the Output Size. When you enter the connection size on this dialog, make sure to subtract 4 bytes from your calculated size. Also note that this dialog expresses the size in Words. If your calculation was performed in Bytes, you must divide by 2.

- In the Details tab, you can select between Point to Point and Multicast for the Target to Scanner data.



- The Configuration Setting tab displays the configuration options for the connection. Here, you can specify the Chassis Size and Data Alignment. The terms T2O and O2T are abbreviations for Target to Originator and Originator to Target.



**TIP** Remember when specifying the Chassis Size to include 1 for the adapter.

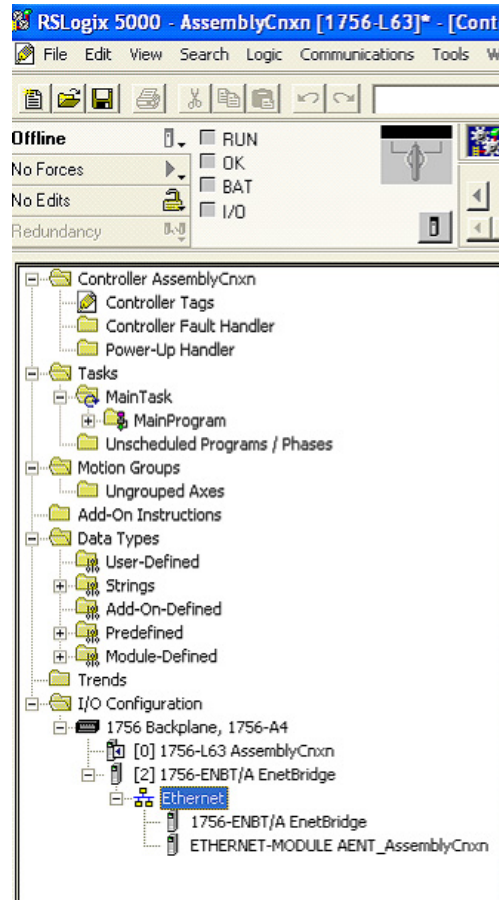
See [Data Alignment](#) for alignment choices.

## Use an Assembly Connection with RSLogix5000

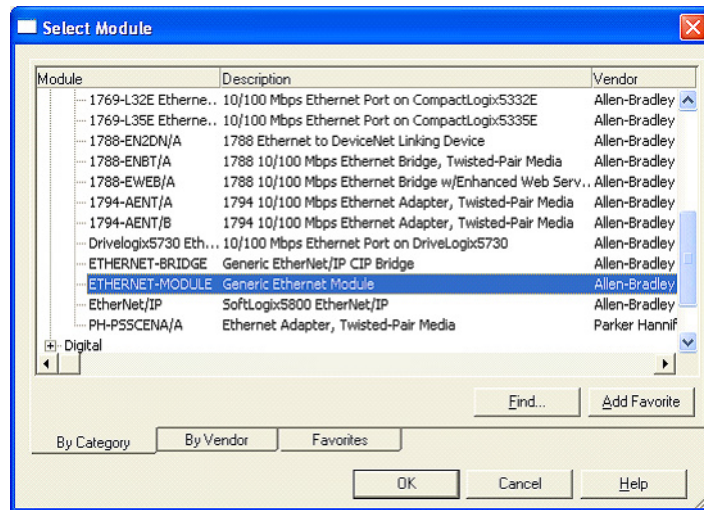
The Assembly connection can be used with RSLogix5000 and the Generic EtherNet/IP profile. When this connection is used in RSLogix5000, there are no intelligent Tags created for the adapter. All Input, Output, and Configuration data are in unstructured Tag arrays.

### Add the Hardware to the I/O Configuration Tree

1. Add a new module to the Ethernet network in the I/O Configuration section of the Controller Organizer pane.



## 2. Select a Generic Ethernet Module.



## Enter the Connection Parameters

In the New Module Properties dialog, enter Connection Parameters, the Comm Format, the module's IP Address, and a name.

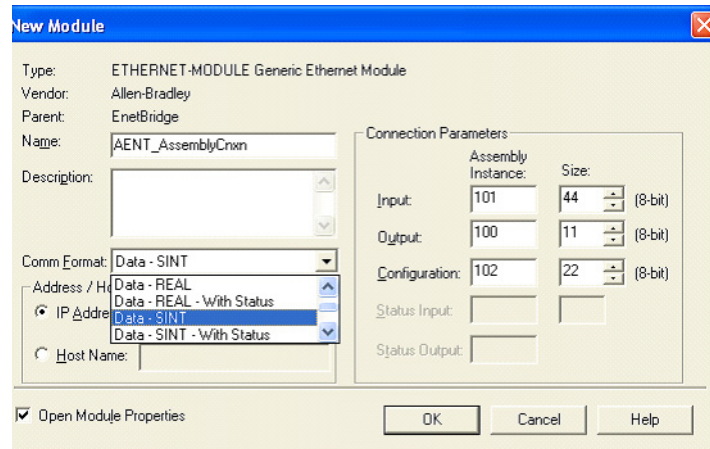
Enter a Name for the module that RSLogix 5000 uses in the tags that are created for this module. The Data - SINT Comm Format should be selected, indicating that all sizes are to be interpreted as a number of bytes. If this connection is a Listen only connection, select the Input Data - SINT Comm Format since it is otherwise not possible to enter an Output config assembly size of 0.

Next, enter the Assembly Instances for the desired connection as described in [Connection Points](#). Enter the sizes (in bytes) for the Input and Output instances per your calculations. See [Calculate the Connection Size](#) for details on obtaining the sizes. If the optional status header is being used, its size (8 bytes) must be included in the Input Size. For RSLogix 5000 the Output Size does not include the Run/Idle header. Here the terms Input and Output refer to the adapter's Produced and Consumed data respectively.

It is possible to make the connection without sending any configuration data. The adapter's Chassis Size can be set from its web page and the adapter will align produced and consumed data by default on byte boundaries. If these options and the default configuration of all I/O modules are acceptable, a 0 can be entered for the Configuration Size on the Module Properties dialog. The

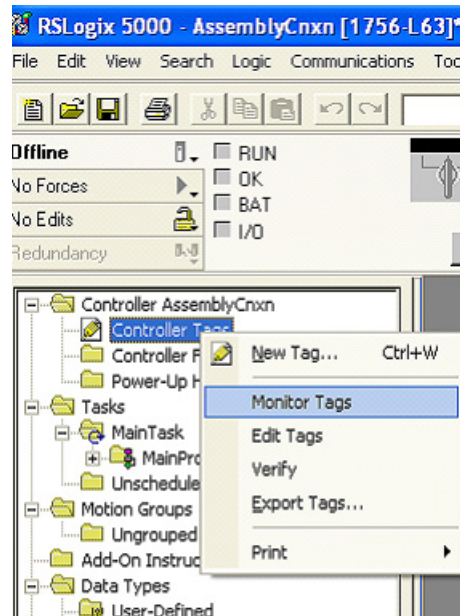


configuration Assembly Instance must be entered even if the size is 0. The following section will describe the steps taken when configuration is needed.



## Build the Configuration Tag

If any configuration is required, the minimum configuration header must be sent and then any individual module configuration may follow. Open the Controller Tags by right-clicking the Controller Tags option from the Controller Organizer pane. Select Monitor Tags.



### *Monitor Tags*

You should see three Tags with the module's name. They will have an C, I, or O suffix denoting Configuration, Input, or Output respectively. Note that the I and O Tags are sized according to the sizes that were entered on the properties

page. The C Tag always has 400 bytes allocated for it regardless of the size specified.

Name	Value	Force Mask	Style	Data Type
+ AENT_AssemblyCnxn:C	{...}	{...}		AB:ETHERNET_MODULE:C
+ AENT_AssemblyCnxn:I	{...}	{...}		AB:ETHERNET_MODULE:C
+ AENT_AssemblyCnxn:O	{...}	{...}		AB:ETHERNET_MODULE:C

### Add Configuration Header

Bytes 0...9 must contain the minimum configuration header information described in [Minimal Adapter Configuration Assembly](#). As can be seen from the figure below, the Chassis Size is set to 0x12 (18 decimal). The produced and consumed alignment choice is Double Word alignment which is enumerated as a 4. See the following table for valid alignment values.

Name	Value	Force Mask	Style	Data Type
- AENT_AssemblyCnxn:C	{...}	{...}		AB:ETHERNET_MODULE:C
- AENT_AssemblyCnxn:C.Data	{...}	{...}	Hex	SINT[400]
+ AENT_AssemblyCnxn:C.Data[0]	16#00		Hex	SINT
+ AENT_AssemblyCnxn:C.Data[1]	16#00		Hex	SINT
+ AENT_AssemblyCnxn:C.Data[2]	16#00		Hex	SINT
+ AENT_AssemblyCnxn:C.Data[3]	16#00		Hex	SINT
+ AENT_AssemblyCnxn:C.Data[4]	16#12		Hex	SINT
+ AENT_AssemblyCnxn:C.Data[5]	16#00		Hex	SINT
+ AENT_AssemblyCnxn:C.Data[6]	16#04		Hex	SINT
+ AENT_AssemblyCnxn:C.Data[7]	16#00		Hex	SINT
+ AENT_AssemblyCnxn:C.Data[8]	16#04		Hex	SINT
+ AENT_AssemblyCnxn:C.Data[9]	16#00		Hex	SINT
+ AENT_AssemblyCnxn:C.Data[10]	16#00		Hex	SINT
+ AENT_AssemblyCnxn:C.Data[11]	16#00		Hex	SINT

**Table 5 - Alignment choices for configuration header**

Alignment Choice	Value
Byte	0
Word	2
Double Word	4
Fixed size per slot	0xFF

### Add I/O Module Configuration

If individual module configuration is required, it can be appended to the configuration header. In the example shown below a 1734-OB4E module is being configured. Byte 10 indicates that the data is to be sent to slot 2. Byte 11 specifies the size of the data as 8 bytes. Bytes 12 and 13 specify the OB4E module configuration assembly instance 0x7B. The instance number is entered in little endian (least significant byte first). In byte 16 the value of 7 indicates that when the module is in Idle mode, Hold Last State should be enabled for

channels 0, 1, and 2 but not channel 3. If more module configuration is needed, it could begin at byte 22 with the slot number of the next module to be configured.

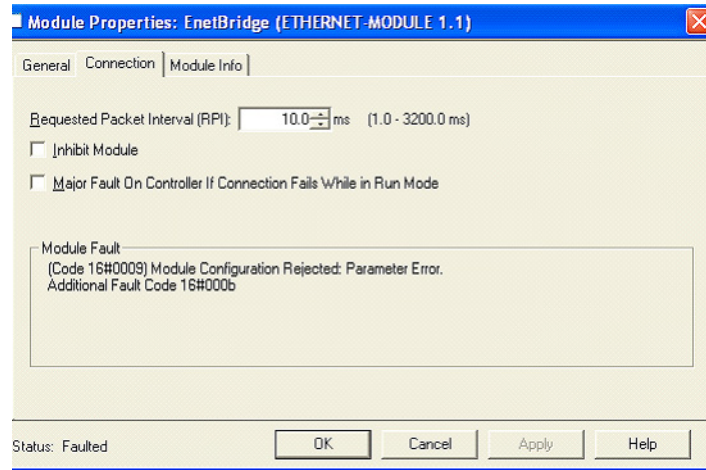
For more information on configuration, see [1734/1738 I/O Module Assembly Information](#).

Name	Value	Force Mask	Style	Data Type
AENT_AssemblyCnxn:C	{...}	{...}		AB:ETHERNET_MODUL
AENT_AssemblyCnxn:C.Data	{...}	{...}	Hex	SINT[400]
AENT_AssemblyCnxn:C.Data[0]	16#00		Hex	SINT
AENT_AssemblyCnxn:C.Data[1]	16#00		Hex	SINT
AENT_AssemblyCnxn:C.Data[2]	16#00		Hex	SINT
AENT_AssemblyCnxn:C.Data[3]	16#00		Hex	SINT
AENT_AssemblyCnxn:C.Data[4]	16#12		Hex	SINT
AENT_AssemblyCnxn:C.Data[5]	16#00		Hex	SINT
AENT_AssemblyCnxn:C.Data[6]	16#04		Hex	SINT
AENT_AssemblyCnxn:C.Data[7]	16#00		Hex	SINT
AENT_AssemblyCnxn:C.Data[8]	16#04		Hex	SINT
AENT_AssemblyCnxn:C.Data[9]	16#00		Hex	SINT
AENT_AssemblyCnxn:C.Data[10]	16#02		Hex	SINT
AENT_AssemblyCnxn:C.Data[11]	16#08		Hex	SINT
AENT_AssemblyCnxn:C.Data[12]	16#7b		Hex	SINT
AENT_AssemblyCnxn:C.Data[13]	16#00		Hex	SINT
AENT_AssemblyCnxn:C.Data[14]	16#00		Hex	SINT
AENT_AssemblyCnxn:C.Data[15]	16#00		Hex	SINT
AENT_AssemblyCnxn:C.Data[16]	16#07		Hex	SINT
AENT_AssemblyCnxn:C.Data[17]	16#00		Hex	SINT
AENT_AssemblyCnxn:C.Data[18]	16#00		Hex	SINT

After the configuration has been entered into the tag, remember to save the RSLogix 5000 project. The tags are only retained upon a save. Also remember that any configuration added here must be reflected in the Configuration Size of the Connection Parameters entered on the Module Properties dialog.

If any part of the configuration assembly is wrong (either the minimal assembly or a portion directed to an I/O module), the connection request will be rejected with the General Return Code indicating an Error in the Data

Segment (0x09). The Extended Error code will indicate the byte offset into the configuration data segment where the error was detected.



The error shown above was created by entering an invalid configuration assembly size on the Module Properties page. A size of 18 bytes was entered. The error here points to an offset of 0x000b (11 decimal). If we return to the configuration tag, byte 0x000b is the location that contains the size of the I/O module configuration. The header is 10 bytes and the module has 8 bytes of configuration. However, we have neglected to add the 4 bytes of overhead needed to describe the slot 2 configuration. When the adapter parsed the configuration assembly to byte 0x000b it saw that it needed 8 more bytes of information. It had already parsed through byte 11, therefore 18 would not be an adequate size. The adapter returns the offset of the first byte where the error is detected (0x000b).

## Assembly Structure

### Assembly Structure Examples

### Byte, Word, and Double Word Alignment

The following chassis is used to demonstrate how the data is aligned for the Byte, Word, and Double Word alignment options. This chassis was intentionally assembled as shown to demonstrate as many use cases as possible. Discrete and analog modules are intermixed. An ARM module is used to reserve space for a future device. The 1734-IB4D module in slot 8 is configured to produce 2 bytes while the IB4D module in slot 7 is configured to produce 1 byte. The ASCII module in slot 10 is configured to produce 9 bytes.

Table 6 - Example POINT system

Cat #	AE NT	IB 4	IB 8	IB 2	OB 2E	OB 4E	OB 8E	IB 4 D	IB 4 D	IE 2 C	AS C	ARM	OW 4	IB 4
Slot #	0	1	2	3	4	5	6	7	8	9	10	11	12	13

Table 7 - Produced Assembly, Byte Aligned

Byte	Bit 7	Bit 6	Bit 5	Bit 4	Bit 3	Bit 2	Bit 1	Bit 0
Produce 0	Slot 7 status	Slot 6 status	Slot 5 status	Slot 4 status	Slot 3 status	Slot 2 status	Slot 1 status	Slot 0 status
Produce 1	Slot 15 status	Slot 14 status	Slot 13 status	Slot 12 status	Slot 11 status	Slot 10 status	Slot 9 status	Slot 8 status
Produce 2	Slot 23 status	Slot 22 status	Slot 21 status	Slot 20 status	Slot 19 status	Slot 18 status	Slot 17 status	Slot 16 status
Produce 3	Slot 31 status	Slot 30 status	Slot 29 status	Slot 28 status	Slot 27 status	Slot 26 status	Slot 25 status	Slot 24 status
Produce 4	Slot 39 status	Slot 38 status	Slot 37 status	Slot 36 status	Slot 35 status	Slot 34 status	Slot 33 status	Slot 32 status
Produce 5	Slot 47 status	Slot 46 status	Slot 45 status	Slot 44 status	Slot 43 status	Slot 42 status	Slot 41 status	Slot 40 status
Produce 6	Slot 55 status	Slot 54 status	Slot 53 status	Slot 52 status	Slot 51 status	Slot 50 status	Slot 49 status	Slot 48 status
Produce 7	Slot 63 status	Slot 62 status	Slot 61 status	Slot 60 status	Slot 59 status	Slot 58 status	Slot 57 status	Slot 56 status
Produce 8	Reserved				Slot 1 Bit 3	Slot 1 Bit 2	Slot 1 Bit 1	Slot 1 Bit 0
Produce 9	Slot 2 Bit 7	Slot 2 Bit 6	Slot 2 Bit 5	Slot 2 Bit 4	Slot 2 Bit 3	Slot 2 Bit 2	Slot 2 Bit 1	Slot 2 Bit 0
Produce 10	Reserved						Slot 3 Bit 1	Slot 3 Bit 0
Produce 11	Reserved						Slot 4 Bit 1	Slot 4 Bit 0
Produce 12	Reserved				Slot 5 Bit 3	Slot 5 Bit 2	Slot 5 Bit 1	Slot 5 Bit 0
Produce 13	Slot 6 Bit 7	Slot 6 Bit 6	Slot 6 Bit 5	Slot 6 Bit 4	Slot 6 Bit 3	Slot 6 Bit 2	Slot 6 Bit 1	Slot 6 Bit 0
Produce 14	Slot 7 Bit 7	Slot 7 Bit 6	Slot 7 Bit 5	Slot 7 Bit 4	Slot 7 Bit 3	Slot 7 Bit 2	Slot 7 Bit 1	Slot 7 Bit 0
Produce 15	Slot 8 Bit 7	Slot 8 Bit 6	Slot 8 Bit 5	Slot 8 Bit 4	Slot 8 Bit 3	Slot 8 Bit 2	Slot 8 Bit 1	Slot 8 Bit 0
Produce 16	Slot 8 Bit 15	Slot 8 Bit 14	Slot 8 Bit 13	Slot 8 Bit 12	Slot 8 Bit 11	Slot 8 Bit 10	Slot 8 Bit 9	Slot 8 Bit 8
Produce 17	Slot 9 Channel 0 - Low Byte							

**Table 7 - Produced Assembly, Byte Aligned**

Byte	Bit 7	Bit 6	Bit5	Bit 4	Bit 3	Bit 2	Bit 1	Bit 0	
Produce 18	Slot 9 Channel 0 - High Byte								
Produce 19	Slot 9 Channel 1 - Low Byte								
Produce 20	Slot 9 Channel 1 - High Byte								
Produce 21	Slot 9 Channel 0 - Status								
Produce 22	Slot 9 Channel 1 - Status								
Produce 23	Slot 10 ASCII Data 1								
Produce 24	Slot 10 ASCII Data 2								
Produce 25	Slot 10 ASCII Data 3								
Produce 26	Slot 10 ASCII Data 4								
Produce 27	Slot 10 ASCII Data 5								
Produce 28	Slot 10 ASCII Data 6								
Produce 29	Slot 10 ASCII Data 7								
Produce 30	Slot 10 ASCII Data 8								
Produce 31	Slot 10 ASCII Data End of String Delimiter								
Produce 32	Slot 11 ARM - Reserved Byte								
Produce 33	Reserved				Slot 13 Bit 3	Slot 13 Bit 2	Slot 13 Bit 1	Slot 13 Bit 0	

**Table 8 - Consumed Assembly, Byte Aligned**

Byte	Bit 7	Bit 6	Bit5	Bit 4	Bit 3	Bit 2	Bit 1	Bit 0	
Consume 0	Reserved							Run/Idle	
Consume 1	Reserved								
Consume 2	Reserved								
Consume 3	Reserved								
Consume 4	Reserved						Slot 4 Bit 1	Slot 4 Bit 0	
Consume 5	Reserved				Slot 5 Bit 3	Slot 5 Bit 2	Slot 5 Bit 1	Slot 5 Bit 0	
Consume 6	Slot 6 Bit 7	Slot 6 Bit 6	Slot 6 Bit 5	Slot 6 Bit 4	Slot 6 Bit 3	Slot 6 Bit 2	Slot 6 Bit 1	Slot 6 Bit 0	
Consume 7	Slot 10 ASCII Data 1								
Consume 8	Slot 10 ASCII Data 2								
Consume 9	Slot 10 ASCII Data 3								
Consume 10	Slot 10 ASCII Data 4								
Consume 11	Slot 10 ASCII Data 5								
Consume 12	Slot 10 ASCII Data End of String Delimiter								
Consume 13	Reserved				Slot 12 Bit 3	Slot 12 Bit 2	Slot 12 Bit 1	Slot 12 Bit 0	

**Table 9 - Produced Assembly, Word Aligned**

Byte	Bit 7	Bit 6	Bit5	Bit 4	Bit 3	Bit 2	Bit 1	Bit 0
Produce 0	Slot 7 status	Slot 6 status	Slot 5 status	Slot 4 status	Slot 3 status	Slot 2 status	Slot1 status	Slot 0 status
Produce 1	Slot 15 status	Slot 14 status	Slot 13 status	Slot 12 status	Slot 11 status	Slot 10 status	Slot 9 status	Slot 8 status
Produce 2	Slot 23 status	Slot 22 status	Slot 21 status	Slot 20 status	Slot 19 status	Slot 18 status	Slot 17 status	Slot 16 status

**Table 9 - Produced Assembly, Word Aligned**

Byte	Bit 7	Bit 6	Bit5	Bit 4	Bit 3	Bit 2	Bit 1	Bit 0
Produce 3	Slot 31 status	Slot 30 status	Slot 29 status	Slot 28 status	Slot 27 status	Slot 26 status	Slot 25 status	Slot 24 status
Produce 4	Slot 39 status	Slot 38 status	Slot 37 status	Slot 36 status	Slot 35 status	Slot 34 status	Slot 33 status	Slot 32 status
Produce 5	Slot 47 status	Slot 46 status	Slot 45 status	Slot 44 status	Slot 43 status	Slot 42 status	Slot 41 status	Slot 40 status
Produce 6	Slot 55 status	Slot 54 status	Slot 53 status	Slot 52 status	Slot 51 status	Slot 50 status	Slot 49 status	Slot 48 status
Produce 7	Slot 63 status	Slot 62 status	Slot 61 status	Slot 60 status	Slot 59 status	Slot 58 status	Slot 57 status	Slot 56 status
Produce 8	Reserved				Slot 1 Bit 3	Slot 1 Bit 2	Slot 1 Bit 1	Slot 1 Bit 0
Produce 9	Slot 2 Bit 7	Slot 2 Bit 6	Slot 2 Bit 5	Slot 2 Bit 4	Slot 2 Bit 3	Slot 2 Bit 2	Slot 2 Bit 1	Slot 2 Bit 0
Produce 10	Reserved						Slot 3 Bit 1	Slot 3 Bit 0
Produce 11	Reserved						Slot 4 Bit 1	Slot 4 Bit 0
Produce 12	Reserved				Slot 5 Bit 3	Slot 5 Bit 2	Slot 5 Bit 1	Slot 5 Bit 0
Produce 13	Slot 6 Bit 7	Slot 6 Bit 6	Slot 6 Bit 6	Slot 6 Bit 4	Slot 6 Bit 3	Slot 6 Bit 2	Slot 6 Bit 1	Slot 6 Bit 0
Produce 14	Slot 7 Bit 7	Slot 7 Bit 6	Slot 7 Bit 5	Slot 7 Bit 4	Slot 7 Bit 3	Slot 7 Bit 2	Slot 7 Bit 1	Slot 7 Bit 0
Produce 15	Pad							
Produce 16	Slot 8 Bit 7	Slot 8 Bit 6	Slot 8 Bit 5	Slot 8 Bit 4	Slot 8 Bit 3	Slot 8 Bit 2	Slot 8 Bit 1	Slot 8 Bit 0
Produce 17	Slot 8 Bit 15	Slot 8 Bit 14	Slot 8 Bit 13	Slot 8 Bit 12	Slot 8 Bit 11	Slot 8 Bit 10	Slot 8 Bit 9	Slot 8 Bit 8
Produce 18	Slot 9 Channel 0 - Low Byte							
Produce 19	Slot 9 Channel 0 - High Byte							
Produce 20	Slot 9 Channel 1 - Low Byte							
Produce 21	Slot 9 Channel 1 - High Byte							
Produce 22	Slot 9 Channel 0 - Status							
Produce 23	Slot 9 Channel 1 - Status							
Produce 24	Slot 10 ASCII Data 1							
Produce 25	Slot 10 ASCII Data 2							
Produce 26	Slot 10 ASCII Data 3							
Produce 27	Slot 10 ASCII Data 4							
Produce 28	Slot 10 ASCII Data 5							
Produce 29	Slot 10 ASCII Data 6							
Produce 30	Slot 10 ASCII Data 7							
Produce 31	Slot 10 ASCII Data 8							
Produce 32	Slot 10 ASCII Data End of String Delimiter							
Produce 33	Slot 11 ARM - Reserved Byte							
Produce 34	Reserved				Slot 13 Bit 3	Slot 13 Bit 2	Slot 13 Bit 1	Slot 13 Bit 0

**Table 10 - Consumed Assembly, Word Aligned**

Byte	Bit 7	Bit 6	Bit5	Bit 4	Bit 3	Bit 2	Bit 1	Bit 0
Consume 0	Reserved							Run/Idle
Consume 1	Reserved							
Consume 2	Reserved							
Consume 3	Reserved							
Consume 4	Reserved						Slot 4 Bit 1	Slot 4 Bit 0

**Table 10 - Consumed Assembly, Word Aligned**

Byte	Bit 7	Bit 6	Bit5	Bit 4	Bit 3	Bit 2	Bit 1	Bit 0
Consume 5	Reserved				Slot 5 Bit 3	Slot 5 Bit 2	Slot 5 Bit 1	Slot 5 Bit 0
Consume 6	Slot 6 Bit 7	Slot 6 Bit 6	Slot 6 Bit 5	Slot 6 Bit 4	Slot 6 Bit 3	Slot 6 Bit 2	Slot 6 Bit 1	Slot 6 Bit 0
Consume 7	Pad							
Consume 8	Slot 10 ASCII Data 1							
Consume 9	Slot 10 ASCII Data 2							
Consume 10	Slot 10 ASCII Data 3							
Consume 11	Slot 10 ASCII Data 4							
Consume 12	Slot 10 ASCII Data 5							
Consume 13	Slot 10 ASCII Data End of String Delimiter							
Consume 14	Reserved				Slot 12 Bit 3	Slot 12 Bit 2	Slot 12 Bit 1	Slot 12 Bit 0

**Table 11 - Produced Assembly, Double Word Aligned**

Byte	Bit 7	Bit 6	Bit5	Bit 4	Bit 3	Bit 2	Bit 1	Bit 0
Produce 0	Slot 7 status	Slot 6 status	Slot 5 status	Slot 4 status	Slot 3 status	Slot 2 status	Slot 1 status	Slot 0 status
Produce 1	Slot 15 status	Slot 14 status	Slot 13 status	Slot 12 status	Slot 11 status	Slot 10 status	Slot 9 status	Slot 8 status
Produce 2	Slot 23 status	Slot 22 status	Slot 21 status	Slot 20 status	Slot 19 status	Slot 18 status	Slot 17 status	Slot 16 status
Produce 3	Slot 31 status	Slot 30 status	Slot 29 status	Slot 28 status	Slot 27 status	Slot 26 status	Slot 25 status	Slot 24 status
Produce 4	Slot 39 status	Slot 38 status	Slot 37 status	Slot 36 status	Slot 35 status	Slot 34 status	Slot 33 status	Slot 32 status
Produce 5	Slot 47 status	Slot 46 status	Slot 45 status	Slot 44 status	Slot 43 status	Slot 42 status	Slot 41 status	Slot 40 status
Produce 6	Slot 55 status	Slot 54 status	Slot 53 status	Slot 52 status	Slot 51 status	Slot 50 status	Slot 49 status	Slot 48 status
Produce 7	Slot 63 status	Slot 62 status	Slot 61 status	Slot 60 status	Slot 59 status	Slot 58 status	Slot 57 status	Slot 56 status
Produce 8	Reserved				Slot 1 Bit 3	Slot 1 Bit 2	Slot 1 Bit 1	Slot 1 Bit 0
Produce 9	Slot 2 Bit 7	Slot 2 Bit 6	Slot 2 Bit 5	Slot 2 Bit 4	Slot 2 Bit 3	Slot 2 Bit 2	Slot 2 Bit 1	Slot 2 Bit 0
Produce 10	Reserved						Slot 3 Bit 1	Slot 3 Bit 0
Produce 11	Reserved						Slot 4 Bit 1	Slot 4 Bit 0
Produce 12	Reserved				Slot 5 Bit 3	Slot 5 Bit 2	Slot 5 Bit 1	Slot 5 Bit 0
Produce 13	Slot 6 Bit 7	Slot 6 Bit 6	Slot 6 Bit 6	Slot 6 Bit 4	Slot 6 Bit 3	Slot 6 Bit 2	Slot 6 Bit 1	Slot 6 Bit 0
Produce 14	Slot 7 Bit 7	Slot 7 Bit 6	Slot 7 Bit 5	Slot 7 Bit 4	Slot 7 Bit 3	Slot 7 Bit 2	Slot 7 Bit 1	Slot 7 Bit 0
Produce 15	Pad							
Produce 16	Slot 8 Bit 7	Slot 8 Bit 6	Slot 8 Bit 5	Slot 8 Bit 4	Slot 8 Bit 3	Slot 8 Bit 2	Slot 8 Bit 1	Slot 8 Bit 0
Produce 17	Slot 8 Bit 15	Slot 8 Bit 14	Slot 8 Bit 13	Slot 8 Bit 12	Slot 8 Bit 11	Slot 8 Bit 10	Slot 8 Bit 9	Slot 8 Bit 8
Produce 18	Pad							
Produce 19	Pad							
Produce 20	Slot 9 Channel 0 - Low Byte							
Produce 21	Slot 9 Channel 0 - High Byte							
Produce 22	Slot 9 Channel 1 - Low Byte							
Produce 23	Slot 9 Channel 1 - High Byte							
Produce 24	Slot 9 Channel 0 - Status							
Produce 25	Slot 9 Channel 1 - Status							
Produce 26	Pad							



**Table 11 - Produced Assembly, Double Word Aligned**

Byte	Bit 7	Bit 6	Bit5	Bit 4	Bit 3	Bit 2	Bit 1	Bit 0	
Produce 27	Pad								
Produce 28	Slot 10 ASCII Data 1								
Produce 29	Slot 10 ASCII Data 2								
Produce 30	Slot 10 ASCII Data 3								
Produce 31	Slot 10 ASCII Data 4								
Produce 32	Slot 10 ASCII Data 5								
Produce 33	Slot 10 ASCII Data 6								
Produce 34	Slot 10 ASCII Data 7								
Produce 35	Slot 10 ASCII Data 8								
Produce 36	Slot 10 ASCII Data End of String Delimiter								
Produce 37	Slot 11 ARM - Reserved Byte								
Produce 38	Reserved				Slot 13 Bit 3	Slot 13 Bit 2	Slot 13 Bit 1	Slot 13 Bit 0	

**Table 12 - Consumed Assembly, Double Word Aligned**

Byte	Bit 7	Bit 6	Bit5	Bit 4	Bit 3	Bit 2	Bit 1	Bit 0	
Consume 0	Reserved							Run/Idle	
Consume 1	Reserved								
Consume 2	Reserved								
Consume 3	Reserved								
Consume 4	Reserved						Slot 4 Bit 1	Slot 4 Bit 0	
Consume 5	Reserved				Slot 5 Bit 3	Slot 5 Bit 2	Slot 5 Bit 1	Slot 5 Bit 0	
Consume 6	Slot 6 Bit 7	Slot 6 Bit 6	Slot 6 Bit 5	Slot 6 Bit 4	Slot 6 Bit 3	Slot 6 Bit 2	Slot 6 Bit 1	Slot 6 Bit 0	
Consume 7	Pad								
Consume 8	Slot 10 ASCII Data 1								
Consume 9	Slot 10 ASCII Data 2								
Consume 10	Slot 10 ASCII Data 3								
Consume 11	Slot 10 ASCII Data 4								
Consume 12	Slot 10 ASCII Data 5								
Consume 13	Slot 10 ASCII Data End of String Delimiter								
Consume 14	Reserved				Slot 12 Bit 3	Slot 12 Bit 2	Slot 12 Bit 1	Slot 12 Bit 0	

### Fixed Size per Slot Alignment

The following chassis is used to demonstrate how the Fixed Size per Slot alignment option might be used. This chassis is built to show a machine that sometimes uses 5 analog modules, but usually only needs 3 modules. In order to maintain data structure consistency (and therefore the same control logic),

Fixed Size per Slot alignment of 6 bytes is used and the unused slots are populated with Address Reserve Modules.

**Table 13 - Example POINT system with unused slots**

Cat #	AE NT	IE 2 C	IE 2 C	IE 2 C	AR M	AR M	IB 4	IB 4	IB 4
Slot #	0	1	2	3	4	5	6	7	8

**Table 14 - Produced Assembly, Fixed Size per Slot Alignment**

Byte	Bit 7	Bit 6	Bit 5	Bit 4	Bit 3	Bit 2	Bit 1	Bit 0
Produce 0	Slot 7 status	Slot 6 status	Slot 5 status	Slot 4 status	Slot 3 status	Slot 2 status	Slot 1 status	Slot 0 status
Produce 1	Slot 15 status	Slot 14 status	Slot 13 status	Slot 12 status	Slot 11 status	Slot 10 status	Slot 9 status	Slot 8 status
Produce 2	Slot 23 status	Slot 22 status	Slot 21 status	Slot 20 status	Slot 19 status	Slot 18 status	Slot 17 status	Slot 16 status
Produce 3	Slot 31 status	Slot 30 status	Slot 29 status	Slot 28 status	Slot 27 status	Slot 26 status	Slot 25 status	Slot 24 status
Produce 4	Slot 39 status	Slot 38 status	Slot 37 status	Slot 36 status	Slot 35 status	Slot 34 status	Slot 33 status	Slot 32 status
Produce 5	Slot 47 status	Slot 46 status	Slot 45 status	Slot 44 status	Slot 43 status	Slot 42 status	Slot 41 status	Slot 40 status
Produce 6	Slot 55 status	Slot 54 status	Slot 53 status	Slot 52 status	Slot 51 status	Slot 50 status	Slot 49 status	Slot 48 status
Produce 7	Slot 63 status	Slot 62 status	Slot 61 status	Slot 60 status	Slot 59 status	Slot 58 status	Slot 57 status	Slot 56 status
Produce 8	Slot 1 Channel 0 - Low Byte							
Produce 9	Slot 1 Channel 0 - High Byte							
Produce 10	Slot 1 Channel 1 - Low Byte							
Produce 11	Slot 1 Channel 1 - High Byte							
Produce 12	Slot 1 Channel 0 - Status							
Produce 13	Slot 1 Channel 1 - Status							
Produce 14	Slot 2 Channel 0 - Low Byte							
Produce 15	Slot 2 Channel 0 - High Byte							
Produce 16	Slot 2 Channel 1 - Low Byte							
Produce 17	Slot 2 Channel 1 - High Byte							
Produce 18	Slot 2 Channel 0 - Status							
Produce 19	Slot 2 Channel 1 - Status							
Produce 20	Slot 3 Channel 0 - Low Byte							
Produce 21	Slot 3 Channel 0 - High Byte							
Produce 22	Slot 3 Channel 1 - Low Byte							
Produce 23	Slot 3 Channel 1 - High Byte							
Produce 24	Slot 3 Channel 0 - Status							
Produce 25	Slot 3 Channel 1 - Status							
Produce 26	Slot 4 ARM - Reserved Byte							
Produce 27	Slot 4 ARM - Reserved Byte							
Produce 28	Slot 4 ARM - Reserved Byte							
Produce 29	Slot 4 ARM - Reserved Byte							
Produce 30	Slot 4 ARM - Reserved Byte							
Produce 31	Slot 4 ARM - Reserved Byte							

**Table 14 - Produced Assembly, Fixed Size per Slot Alignment**

Byte	Bit 7	Bit 6	Bit5	Bit 4	Bit 3	Bit 2	Bit 1	Bit 0
Produce 32	Slot 5 ARM - Reserved Byte							
Produce 33	Slot 5 ARM - Reserved Byte							
Produce 34	Slot 5 ARM - Reserved Byte							
Produce 35	Slot 5 ARM - Reserved Byte							
Produce 36	Slot 5 ARM - Reserved Byte							
Produce 37	Slot 5 ARM - Reserved Byte							
Produce 38	Reserved				Slot 6 Bit 3	Slot 6 Bit 2	Slot 6 Bit 1	Slot 6 Bit 0
Produce 39	Pad							
Produce 40	Pad							
Produce 41	Pad							
Produce 42	Pad							
Produce 43	Pad							
Produce 44					Slot 7 Bit 3	Slot 7 Bit 2	Slot 7 Bit 1	Slot 7 Bit 0
Produce 45	Pad							
Produce 46	Pad							
Produce 47	Pad							
Produce 48	Pad							
Produce 49	Pad							
Produce 50					Slot 8 Bit 3	Slot 8 Bit 2	Slot 8 Bit 1	Slot 8 Bit 0
Produce 51	Pad							
Produce 52	Pad							
Produce 53	Pad							
Produce 54	Pad							
Produce 55	Pad							

**Table 15 - Consumed Assembly, Fixed Size per Slot Alignment**

Byte	Bit 7	Bit 6	Bit5	Bit 4	Bit 3	Bit 2	Bit 1	Bit 0
Consume 0	Reserved							
Consume 1	Reserved							
Consume 2	Reserved							
Consume 3	Reserved							
Consume 4	Pad							
Consume 5	Pad							
Consume 6	Pad							
Consume 7	Pad							
Consume 8	Pad							
Consume 9	Pad							
Consume 10	Pad							
Consume 11	Pad							
Consume 12	Pad							

**Table 15 - Consumed Assembly, Fixed Size per Slot Alignment**

Byte	Bit 7	Bit 6	Bit5	Bit 4	Bit 3	Bit 2	Bit 1	Bit 0
Consume 13	Pad							
Consume 14	Pad							
Consume 15	Pad							
Consume 16	Pad							
Consume 17	Pad							
Consume 18	Pad							
Consume 19	Pad							
Consume 20	Pad							
Consume 21	Pad							
Consume 22	Pad							
Consume 23	Pad							
Consume 24	Pad							
Consume 25	Pad							
Consume 26	Pad							
Consume 27	Pad							
Consume 28	Pad							
Consume 29	Pad							
Consume 30	Pad							
Consume 31	Pad							
Consume 32	Pad							
Consume 33	Pad							
Consume 34	Pad							
Consume 35	Pad							
Consume 36	Pad							
Consume 37	Pad							
Consume 38	Pad							
Consume 39	Pad							
Consume 40	Pad							
Consume 41	Pad							
Consume 42	Pad							
Consume 43	Pad							
Consume 44	Pad							
Consume 45	Pad							
Consume 46	Pad							
Consume 47	Pad							
Consume 48	Pad							
Consume 49	Pad							
Consume 50	Pad							
Consume 51	Pad							

**Table 16 - Configuration Assembly**

Byte	Bit 7	Bit 6	Bit 5	Bit 4	Bit 3	Bit 2	Bit 1	Bit 0
Config 0	Reserved							CRN
Config 1	Reserved							
Config 2	Reserved							
Config 3	Reserved							
■ Config 4	Chassis Size (Low Byte)							
■ Config 5	Chassis Size (High Byte)							
■ Config 6	Alignment for Produced Assembly (T->0)							
■ Config 7	Size per Slot (T->0)							
Config 8	Alignment for Produced Assembly (0->T)							
Config 9	Size per Slot (0->T)							

**Notes:**

## 1734/1738 I/O Module Assembly Information

### Module Assembly Information

### Discrete Modules

Table 17 - POINT I/O and ArmorPOINT I/O Discrete I/O modules

Cat. No	Description	Configuration Assembly Instance	Configuration Size	Produced Size	Consumed Size
1734-IB2 1738-IB2	2 point DC sink input	103	8	1	0
1734-IB4 1738-IB4	4 point DC sink input	103	16	1	0
1734-IB4D 1738-IB4D	2 point DC sink input with diagnostics	103	18	2,1	0
1734-IB8 1738-IB8	8 point DC sink input	103	32	1	0
1734-IV2	2 point DC source input	103	8	1	0
1734-IV4 1738-IV4	4 point DC source input	103	16	1	0
1734-IV8 1738-IV8	8 point DC source input	103	32	1	0
1734-OB2E 1738-OB2E	2 point DC source output	123	8	1	1
1734-OB4E 1738-OB4E	4 point DC source output	123	8	1	1
1734-OB2	2 point DC source output	123	8	1 <sup>(1)</sup>	1
1734-OB4	4 point DC source output	123	8	1	1
1734-OB8	8 point DC source output	123	8	1	1
1734-OB8E 1738-OB8E	8 point DC source output	123	8	1	1
1734-OW2	2 point relay output	103	4	0	1
1734-OW4 1738-OW4	4 point relay output	103	4	0	1
1734-OV2E	2 point 24V DC sink output	123	8	1	1
1734-OV4E 1738-OV4E	4 point 24V DC sink output	123	8	1	1
1734-OV8E	8 point 24V DC sink output	123	8	1	1
1734-OX2	2 point Form C Relay output	103	4	0	1
1734-OB2EP 1738-OB2EP	2 point 24V DC 2A Protected output	123	8	1	1
1734-IA2 1738-IA2	2 point 120V AC input	103	8	1	0

**Table 17 - POINT I/O and ArmorPOINT I/O Discrete I/O modules**

Cat. No	Description	Configuration Assembly Instance	Configuration Size	Produced Size	Consumed Size
1734-IA4	4 point 120V AC input	103	16	1	0
1734-IM2	2 point 220V AC input	103	8	1	0
1734-IM4	4 point 220V AC input	103	16	1	0
1734-OA2 1738-OA2	2 point 120V/220V AC output	103	4	0	1
1734-OA4	4-channel 120V/220V AC output	103	4	0	1
1738-IB16	16 point 24V DC sink input	103	6	2,3	0
1738-OB16	16 point 24V DC source input	123	2	1	2
1734-8CFG 1738-8CFG	8 point 24V DC configurable sink input/source output	103	8	1	1

(1) While these modules (OB2, OB4, and OB8) have no meaningful data, they return a byte of 0 to be compatible with the "E" modules. In this manner they can be interchanged. Also these modules expect the same 8-byte configuration assembly even though only the first 4 bytes are meaningful.

## Analog and Specialty I/O Modules

**Table 18 - POINT and ArmorPOINT Analog and Specialty I/O modules**

Cat. No	Description	Configuration Assembly Instance	Configuration Size	Produced Size	Consumed Size
1734-VHSC5	1 point 5V, 2 out very high speed counter	108	54	6	2,2,4
1734-VHSC24 1738-VHSC24	1 point 24V, 2 out very high speed counter	108	54	6	2,2,4
1734-IJ 1738-IJ	1 point 5V counter	123	18	6	1
1734-IK	1 point 24V counter	123	18	6	1
1734-IE2C 1738-IE2C	2 point analog current input	123	38	6	0
1734-IE4C 1738-IE4C	4 point analog current input	123	74	12	0
1734-IE8C	8 point analog current input	123	146	24	0
1734-OE2C 1738-OE2C	2 point analog current output	123	36	2	4
1734-OE4C 1738-OE4C	4 point analog current output	123	72	4	8
1734-IT21 1738-IT21	2 point thermocouple input	103	46	8	0
1734-IR2 1738-IR2	2 channel, 2point RTD input	123	38	6	0
1734-IR2E	2 point enhanced RTD input	123	38	6	0
1734-IE2V 1738-IE2V	2 point analog voltage input	123	38	6	0
1734-OE2V 1738-OE2V	2 point analog voltage output	123	36	2	4



**Table 18 - POINT and ArmorPOINT Analog and Specialty I/O modules**

Cat. No	Description	Configuration Assembly Instance	Configuration Size	Produced Size	Consumed Size
1734-SSI 1738-SSI	POINT I/O synchronous serial interface	123	26	10	2
1734-232ASC 1738-232ASC	POINT I/O RS232 ASCII interface	103	18	4...132 default = 24	4...132 default = 24
1734-485ASC 1738-485ASC	POINT I/O RS485 ASCII interface	103	18	4...132 default = 24	4...132 default = 24
1734-ARM	Address reserve	N/A	0	1	0

## Data Format

The POINT I/O products specify multi-byte data values in little endian format. The term little endian refers to the ordering method in which:

- The least significant byte of a data item is ordered first.
- The most significant byte of a data item is ordered last
- All bytes in between are ordered sequentially, from least significant byte to most significant byte.

Layout for 16 bit numbers:

```
TagName[Low Byte]
TagName[High Byte]
```

Layout for 32 bit numbers:

```
TagName[Low Byte]
TagName
TagName
TagName[High Byte]
```

Layout for Array data:

```
TagName[0]
TagName[1]
TagName[2]
:
:
TagName[N]
```

## Module Specific Details

### Two-channel Discrete Input Modules

All two-channel discrete input modules use the same configuration and input assemblies. Use the tables shown below for the following modules:

- 1734-IB2 or 1738-IB2
- 1734-IV2 or 1738-IV2
- 1734-IA2 or 1738-IA2
- 1734-IM2 or 1738-IM2

**Table 19 - Configuration Assembly Instance 103**

Byte	Bit 7	Bit 6	Bit 5	Bit 4	Bit 3	Bit 2	Bit 1	Bit 0
0	Input 0 Off to On Filter Low Byte							
1	Input 0 Off to On Filter High Byte							
2	Input 0 On to Off Filter Low Byte							
3	Input 0 On to Off Filter High Byte							
4	Input 1 Off to On Filter Low Byte							
5	Input 1 Off to On Filter High Byte							
6	Input 1 On to Off Filter Low Byte							
7	Input 1 On to Off Filter High Byte							

**Table 20 - Produced Input Data Assembly 2**

Byte	Bit 7	Bit 6	Bit 5	Bit 4	Bit 3	Bit 2	Bit 1	Bit 0
0	Reserved						Ch 1	Ch 0

### Four-channel Discrete Input Modules

All four channel discrete input modules use the same configuration and input assemblies. Use the tables shown below for the following modules:

- 1734-IB4 or 1738-IB4
- 1734-IV4 or 1738-IV4
- 1734-IA4 or 1738-IA4
- 1734-IM4 or 1738-IM4

**Table 21 - Configuration Assembly Instance 103**

Byte	Bit 7	Bit 6	Bit 5	Bit 4	Bit 3	Bit 2	Bit 1	Bit 0
0	Input 0 Off to On Filter Low Byte							
1	Input 0 Off to On Filter High Byte							
2	Input 0 On to Off Filter Low Byte							
3	Input 0 On to Off Filter High Byte							
4	Input 1 Off to On Filter Low Byte							
5	Input 1 Off to On Filter High Byte							
6	Input 1 On to Off Filter Low Byte							
7	Input 1 On to Off Filter High Byte							

**Table 21 - Configuration Assembly Instance 103**

Byte	Bit 7	Bit 6	Bit 5	Bit 4	Bit 3	Bit 2	Bit 1	Bit 0
8	Input 2 Off to On Filter Low Byte							
9	Input 2 Off to On Filter High Byte							
10	Input 2 On to Off Filter Low Byte							
11	Input 2 On to Off Filter High Byte							
12	Input 3 Off to On Filter Low Byte							
13	Input 3 Off to On Filter High Byte							
14	Input 3 On to Off Filter Low Byte							
15	Input 3 On to Off Filter High Byte							

**Table 22 - Produced Input Data Assembly 3**

Byte	Bit 7	Bit 6	Bit 5	Bit 4	Bit 3	Bit 2	Bit 1	Bit 0
0	Reserved				Ch 3	Ch 2	Ch 1	Ch 0

## Eight-channel Discrete Input Modules

All eight-channel discrete input modules use the same configuration and input assemblies. Use the tables shown below for the following modules:

- 1734-IB8 or 1738-IB8
- 1734-IV8 or 1738-IV8

**Table 23 - Configuration Assembly Instance 103**

Byte	Bit 7	Bit 6	Bit 5	Bit 4	Bit 3	Bit 2	Bit 1	Bit 0
0	Input 0 Off to On Filter Low Byte							
1	Input 0 Off to On Filter High Byte							
2	Input 0 On to Off Filter Low Byte							
3	Input 0 On to Off Filter High Byte							
4	Input 1 Off to On Filter Low Byte							
5	Input 1 Off to On Filter High Byte							
6	Input 1 On to Off Filter Low Byte							
7	Input 1 On to Off Filter High Byte							
8	Input 2 Off to On Filter Low Byte							
9	Input 2 Off to On Filter High Byte							
10	Input 2 On to Off Filter Low Byte							
11	Input 2 On to Off Filter High Byte							
12	Input 3 Off to On Filter Low Byte							
13	Input 3 Off to On Filter High Byte							
14	Input 3 On to Off Filter Low Byte							
15	Input 3 On to Off Filter High Byte							

**Table 23 - Configuration Assembly Instance 103**

Byte	Bit 7	Bit 6	Bit 5	Bit 4	Bit 3	Bit 2	Bit 1	Bit 0
16	Input 4 Off to On Filter Low Byte							
17	Input 4 Off to On Filter High Byte							
18	Input 4 On to Off Filter Low Byte							
19	Input 4 On to Off Filter High Byte							
20	Input 5 Off to On Filter Low Byte							
21	Input 5 Off to On Filter High Byte							
22	Input 5 On to Off Filter Low Byte							
23	Input 5 On to Off Filter High Byte							
24	Input 6 Off to On Filter Low Byte							
25	Input 6 Off to On Filter High Byte							
26	Input 6 On to Off Filter Low Byte							
27	Input 6 On to Off Filter High Byte							
28	Input 7 Off to On Filter Low Byte							
29	Input 7 Off to On Filter High Byte							
30	Input 7 On to Off Filter Low Byte							
31	Input 7 On to Off Filter High Byte							

**Table 24 - Produced Input Data Assembly 4**

Byte	Bit 7	Bit 6	Bit 5	Bit 4	Bit 3	Bit 2	Bit 1	Bit 0
0	Ch 7	Ch 6	Ch 5	Ch 4	Ch 3	Ch 2	Ch 1	Ch 0

## Two-channel Discrete Output Modules with Status

All two-channel “enhanced” discrete output modules use the same configuration and I/O assemblies. Use the tables shown below for the following modules:

- 1734-OB2E or 1738-OB2E
- 1734-OV2E or 1738-OV2E
- 1734-OB2EP or 1738-OB2EP

**Table 25 - Configuration Assembly Instance 123**

Byte	Bit 7	Bit 6	Bit 5	Bit 4	Bit 3	Bit 2	Bit 1	Bit 0
0	Reserved						Fault State 1	Fault State 0
1	Reserved						Fault Value 1	Fault Value 0
2	Reserved						Idle State 1	Idle State 0
3	Reserved						Idle Value 1	Idle Value 0
4	Reserved						Enable No Load 1	Enable No Load 0

**Table 25 - Configuration Assembly Instance 123**

Byte	Bit 7	Bit 6	Bit 5	Bit 4	Bit 3	Bit 2	Bit 1	Bit 0
5	Reserved						Reset mode 1	Reset mode 0
6	Reserved						Enable Latched Alarms 1	Enable Latched Alarms 0
7	Pad							

**Table 26 - Produced Input Data Assembly 42**

Byte	Bit 7	Bit 6	Bit 5	Bit 4	Bit 3	Bit 2	Bit 1	Bit 0
0	Reserved						Ch 1 Status	Ch 0 Status

**Table 27 - Consumed Output Data Assembly 32**

Byte	Bit 7	Bit 6	Bit 5	Bit 4	Bit 3	Bit 2	Bit 1	Bit 0
0	Reserved						Ch 1	Ch 0

## Two-channel Discrete Output Modules

Use the tables shown below for the following modules:

- 1734-OB2 or 1738-OB2

**Table 28 - Configuration Assembly Instance 123**

Byte	Bit 7	Bit 6	Bit 5	Bit 4	Bit 3	Bit 2	Bit 1	Bit 0
0	Reserved						Fault State 1	Fault State 0
1	Reserved						Fault Value 1	Fault Value 0
2	Reserved						Idle State 1	Idle State 0
3	Reserved						Idle Value 1	Idle Value 0
4	Reserved (Set to 0)							
5	Reserved (Set to 0)							
6	Reserved (Set to 0)							
7	Pad							

**Table 29 - Produced Input Data Assembly 42**

Byte	Bit 7	Bit 6	Bit 5	Bit 4	Bit 3	Bit 2	Bit 1	Bit 0
0	Reserved							

**Table 30 - Consumed Output Data Assembly 32**

Byte	Bit 7	Bit 6	Bit 5	Bit 4	Bit 3	Bit 2	Bit 1	Bit 0
0	Reserved						Ch 1	Ch 0

## Four-channel Discrete Output Modules with Status

All four-channel "enhanced" discrete output modules use the same configuration and I/O assemblies. Use the tables shown below for the following modules:

- 1734-OB4E or 1738-OB4E
- 1734-OV4E or 1738-OV4E

**Table 31 - Configuration Assembly Instance 123**

Byte	Bit 7	Bit 6	Bit 5	Bit 4	Bit 3	Bit 2	Bit 1	Bit 0
0	Reserved				Fault State 3	Fault State 2	Fault State 1	Fault State 0
1	Reserved				Fault Value 3	Fault Value 2	Fault Value 1	Fault Value 0
2	Reserved				Idle State 3	Idle State 2	Idle State 1	Idle State 0
3	Reserved				Idle Value 3	Idle Value 2	Idle Value 1	Idle Value 0
4	Reserved				Enable No Load 3	Enable No Load 2	Enable No Load 1	Enable No Load 0
5	Reserved				Reset mode 3	Reset mode 2	Reset mode 1	Reset mode 0
6	Reserved				Enable Latched Alarms 3	Enable Latched Alarms 2	Enable Latched Alarms 1	Enable Latched Alarms 0
7	Pad							

**Table 32 - Produced Input Data Assembly 43**

Byte	Bit 7	Bit 6	Bit 5	Bit 4	Bit 3	Bit 2	Bit 1	Bit 0
0	Reserved							

**Table 33 - Consumed Output Data Assembly 33**

Byte	Bit 7	Bit 6	Bit 5	Bit 4	Bit 3	Bit 2	Bit 1	Bit 0
0	Reserved				Ch 3	Ch 2	Ch 1	Ch 0

## Four-channel Discrete Output Modules

Use the tables shown below for the following modules:

- 1734-OB4 or 1738-OB4

**Table 34 - Configuration Assembly Instance 123**

Byte	Bit 7	Bit 6	Bit 5	Bit 4	Bit 3	Bit 2	Bit 1	Bit 0
0	Reserved				Fault State 3	Fault State 2	Fault State 1	Fault State 0
1	Reserved				Fault Value 3	Fault Value 2	Fault Value 1	Fault Value 0
2	Reserved				Idle State 3	Idle State 2	Idle State 1	Idle State 0
3	Reserved				Idle Value 3	Idle Value 2	Idle Value 1	Idle Value 0
4	Reserved (Set to 0)							

**Table 34 - Configuration Assembly Instance 123**

Byte	Bit 7	Bit 6	Bit 5	Bit 4	Bit 3	Bit 2	Bit 1	Bit 0
5	Reserved (Set to 0)							
6	Reserved (Set to 0)							
7	Pad							

**Table 35 - Produced Input Data Assembly 43**

Byte	Bit 7	Bit 6	Bit 5	Bit 4	Bit 3	Bit 2	Bit 1	Bit 0
0	Reserved							

**Table 36 - Consumed Output Data Assembly 33**

Byte	Bit 7	Bit 6	Bit 5	Bit 4	Bit 3	Bit 2	Bit 1	Bit 0
0	Reserved				Ch 3	Ch 2	Ch 1	Ch 0

## Eight-channel Discrete Output Modules with Status

All eight-channel "enhanced" discrete output modules use the same configuration and I/O assemblies. Use the tables shown below for the following modules:

- 1734-OB8E or 1738-OB8E
- 1734-OV8E or 1738-OV8E

**Table 37 - Configuration Assembly Instance 123**

Byte	Bit 7	Bit 6	Bit 5	Bit 4	Bit 3	Bit 2	Bit 1	Bit 0
0	Fault State 7	Fault State 6	Fault State 5	Fault State 4	Fault State 3	Fault State 2	Fault State 1	Fault State 0
1	Fault Value 7	Fault Value 6	Fault Value 5	Fault Value 4	Fault Value 3	Fault Value 2	Fault Value 1	Fault Value 0
2	Idle State 7	Idle State 6	Idle State 5	Idle State 4	Idle State 3	Idle State 2	Idle State 1	Idle State 0
3	Idle Value 7	Idle Value 6	Idle Value 5	Idle Value 4	Idle Value 3	Idle Value 2	Idle Value 1	Idle Value 0
4	Enable No Load 7	Enable No Load 6	Enable No Load 5	Enable No Load 4	Enable No Load 3	Enable No Load 2	Enable No Load 1	Enable No Load 0
5	Reset Mode 7	Reset Mode 6	Reset Mode 5	Reset Mode 4	Reset Mode 3	Reset Mode 2	Reset mode 1	Reset mode 0
6	Enable Latched Alarms 7	Enable Latched Alarms 6	Enable Latched Alarms 5	Enable Latched Alarms 4	Enable Latched Alarms 3	Enable Latched Alarms 2	Enable Latched Alarms 1	Enable Latched Alarms 0
7	Pad							

**Table 38 - Produced Input Data Assembly 44**

Byte	Bit 7	Bit 6	Bit 5	Bit 4	Bit 3	Bit 2	Bit 1	Bit 0
0	Ch 7 status	Ch 6 status	Ch 5 status	Ch status	Ch 3 status	Ch 2 status	Ch 1 status	Ch 0 status

**Table 39 - Consumed Output Data Assembly 34**

Byte	Bit 7	Bit 6	Bit 5	Bit 4	Bit 3	Bit 2	Bit 1	Bit 0
0	Ch 7	Ch 6	Ch 5	Ch 4	Ch 3	Ch 2	Ch 1	Ch 0

## Eight-channel Discrete Output Modules

Use the tables shown below for the following modules:

- 1734-OB8 or 1738-OB8

**Table 40 - Configuration Assembly Instance 123**

Byte	Bit 7	Bit 6	Bit 5	Bit 4	Bit 3	Bit 2	Bit 1	Bit 0
0	Fault State 7	Fault State 6	Fault State 5	Fault State 4	Fault State 3	Fault State 2	Fault State 1	Fault State 0
1	Fault Value 7	Fault Value 6	Fault Value 5	Fault Value 4	Fault Value 3	Fault Value 2	Fault Value 1	Fault Value 0
2	Idle State 7	Idle State 6	Idle State 5	Idle State 4	Idle State 3	Idle State 2	Idle State 1	Idle State 0
3	Idle Value 7	Idle Value 6	Idle Value 5	Idle Value 4	Idle Value 3	Idle Value 2	Idle Value 1	Idle Value 0
4	Reserved (Set to 0)							
5	Reserved (Set to 0)							
6	Reserved (Set to 0)							
7	Pad							

**Table 41 - Produced Input Data Assembly 44**

Byte	Bit 7	Bit 6	Bit 5	Bit 4	Bit 3	Bit 2	Bit 1	Bit 0
0	Reserved							

**Table 42 - Consumed Output Data Assembly 34**

Byte	Bit 7	Bit 6	Bit 5	Bit 4	Bit 3	Bit 2	Bit 1	Bit 0
0	Ch 7	Ch 6	Ch 5	Ch 4	Ch 3	Ch 2	Ch 1	Ch 0

## Four-channel Discrete Diagnostic Input Modules

Use the tables shown below for the following modules:

- 1734-IB4D or 1738-IB4DM12

**Table 43 - Configuration Assembly Instance 103**

Byte	Bit 7	Bit 6	Bit 5	Bit 4	Bit 3	Bit 2	Bit 1	Bit 0
0	Input 0 Off to On Filter Low Byte							
1	Input 0 Off to On Filter High Byte							
2	Input 0 On to Off Filter Low Byte							
3	Input 0 On to Off Filter High Byte							
4	Input 1 Off to On Filter Low Byte							
5	Input 1 Off to On Filter High Byte							
6	Input 1 On to Off Filter Low Byte							
7	Input 1 On to Off Filter High Byte							



**Table 43 - Configuration Assembly Instance 103**

Byte	Bit 7	Bit 6	Bit 5	Bit 4	Bit 3	Bit 2	Bit 1	Bit 0
8	Input 2 Off to On Filter Low Byte							
9	Input 2 Off to On Filter High Byte							
10	Input 2 On to Off Filter Low Byte							
11	Input 2 On to Off Filter High Byte							
12	Input 3 Off to On Filter Low Byte							
13	Input 3 Off to On Filter High Byte							
14	Input 3 On to Off Filter Low Byte							
15	Input 3 On to Off Filter High Byte							
16	Autobaud Disable				Enable Open Wire Detect 3	Enable Open Wire Detect 2	Enable Open Wire Detect 1	Enable Open Wire Detect 0
17	Produced Assembly Instance							

This POINT I/O input module produces 1 or 2 bytes of input data based on which produced assembly is selected. The default assembly (instance 101) is 2 bytes. This module does not consume I/O data.

**Table 44 - Produced Diagnostic Input Data Assembly 101**

Byte	Bit 7	Bit 6	Bit 5	Bit 4	Bit 3	Bit 2	Bit 1	Bit 0
0	Fault 3	Fault 2	Fault 1	Fault 0	Input 3	Input 2	Input 1	Input 0
1	Short Circuit 3	Short Circuit 2	Short Circuit 1	Short Circuit 0	Off Wire 3	Off Wire 2	Off Wire 1	Off Wire 0

**Table 45 - Produced Input Data Assembly 23**

Byte	Bit 7	Bit 6	Bit 5	Bit 4	Bit 3	Bit 2	Bit 1	Bit 0
0	Fault 3	Fault 2	Fault 1	Fault 0	Input 3	Input 2	Input 1	Input 0

## Two-channel Relay and AC Output Modules

All two-channel relay and AC output modules use the same Consumed I/O assembly. There are no Produced or Configuration assemblies for these modules. Use the table shown below for the following modules:

- 1734-OW2
- 1734-OX2
- 1734-OA2 or 1738-OA2M12AC3

**Table 46 - Consumed Output Data Assembly 32**

Byte	Bit 7	Bit 6	Bit 5	Bit 4	Bit 3	Bit 2	Bit 1	Bit 0
0	Reserved						Ch 1	Ch 0

## Four-channel Relay and AC Output Modules

All four channel relay and AC output modules use the same Consumed I/O assembly. There are no Produced or Configuration assemblies for these modules. Use the table shown below for the following modules:

- 1734-OW4
- 1738-OW4M12 or 1738-OW4M12AC
- 1734-OA4

**Table 47 - Consumed Output Data Assembly 32**

Byte	Bit 7	Bit 6	Bit 5	Bit 4	Bit 3	Bit 2	Bit 1	Bit 0
0	Reserved				Ch 3	Ch 2	Ch 1	Ch 0

## Sixteen-channel Discrete Diagnostic Input Modules

Use the table shown below for the following modules:

- 1738-IB16DM12

**Table 48 - Configuration Assembly Instance 103**

Byte	Bit 7	Bit 6	Bit 5	Bit 4	Bit 3	Bit 2	Bit 1	Bit 0
0	Input Off to On Filter Low Byte							
1	Input Off to On Filter High Byte							
2	Input On to Off Filter Low Byte							
3	Input On to Off Filter High Byte							
4	Produced Assembly							
5	Reserved = 0							

This POINT I/O input module produces 2 or 3 bytes of input data based on which produced assembly is selected. The default assembly instance 101 is 3 bytes. This module does not consume I/O data.

**Table 49 - Produced Diagnostic Input Data Assembly Instance 101**

Byte	Bit 7	Bit 6	Bit 5	Bit 4	Bit 3	Bit 2	Bit 1	Bit 0
0	Ch 7	Ch 6	Ch 5	Ch 4	Ch 3	Ch 2	Ch 1	Ch 0
1	Ch 15	Ch 14	Ch 13	Ch 12	Ch 11	Ch 10	Ch 9	Ch 8
2	Reserved			Fault LED State	SSV Fault 12...15	SSV Fault 8...11	SSV Fault 4...7	SSV Fault 0...3

**Table 50 - Produced Input Data Assembly Instance 5**

Byte	Bit 7	Bit 6	Bit 5	Bit 4	Bit 3	Bit 2	Bit 1	Bit 0
0	Ch 7	Ch 6	Ch 5	Ch 4	Ch 3	Ch 2	Ch 1	Ch 0
1	Ch 15	Ch 14	Ch 13	Ch 12	Ch 11	Ch 10	Ch 9	Ch 8

## Sixteen-channel Discrete Output Modules

Use the table shown below for the following modules:

- 1738-OB16E19M23
- 1738-OB16E25DS
- 1738-OB16EM12

**Table 51 - Configuration Assembly Instance 123**

Byte	Bit 7	Bit 6	Bit 5	Bit 4	Bit 3	Bit 2	Bit 1	Bit 0
0				Enable Latched Faults	Idle Value	Idle Action	Fault Value	Fault Action
1	Reserved = 0							

**Table 52 - Produced Diagnostic Data Assembly 101**

Byte	Bit 7	Bit 6	Bit 5	Bit 4	Bit 3	Bit 2	Bit 1	Bit 0
0	Reserved			Fault LED State	Fault 12...15	Fault 8...11	Fault 4...7	Fault 0...3

**Table 53 - Consumed Output Data Assembly 37**

Byte	Bit 7	Bit 6	Bit 5	Bit 4	Bit 3	Bit 2	Bit 1	Bit 0
0	Ch 7	Ch 6	Ch 5	Ch 4	Ch 3	Ch 2	Ch 1	Ch 0
1	Ch 15	Ch 14	Ch 13	Ch 12	Ch 11	Ch 10	Ch 9	Ch 8

## Eight-channel Configurable Discrete Input/Output Modules

All eight channel "configurable" discrete I/O modules use the same configuration and I/O assemblies. Use the tables shown below for the following modules:

- 1734-8CFG
- 1738-8CFGM12
- 1738-8CFGM23
- 1738-8CFGM8

**Table 54 - Configuration Assembly Instance 103**

Byte	Bit 7	Bit 6	Bit 5	Bit 4	Bit 3	Bit 2	Bit 1	Bit 0
0	Input Off to On Filter Low Byte							
1	Input Off to On Filter High Byte							
2	Input On to Off Filter Low Byte							
3	Input On to Off Filter High Byte							
4	Fault Action 7	Fault Action 6	Fault Action 5	Fault Action 4	Fault Action 3	Fault Action 2	Fault Action 1	Fault Action 0
5	Fault Value 7	Fault Value 6	Fault Value 5	Fault Value 4	Fault Value 3	Fault Value 2	Fault Value 1	Fault Value 0
6	Idle Action 7	Idle Action 6	Idle Action 5	Idle Action 4	Idle Action 3	Idle Action 2	Idle Action 1	Idle Action 0
7	Idle Value 7	Idle Value 6	Idle Value 5	Idle Value 4	Idle Value 3	Idle Value 2	Idle Value 1	Idle Value 0

**Table 55 - Produced Input Data Assembly 4**

Byte	Bit 7	Bit 6	Bit 5	Bit 4	Bit 3	Bit 2	Bit 1	Bit 0
0	Ch 7	Ch 6	Ch 5	Ch 4	Ch 3	Ch 2	Ch 1	Ch 0

**Table 56 - Consumed Output Data Assembly 34**

Byte	Bit 7	Bit 6	Bit 5	Bit 4	Bit 3	Bit 2	Bit 1	Bit 0
0	Ch 7	Ch 6	Ch 5	Ch 4	Ch 3	Ch 2	Ch 1	Ch 0

## Very High Speed Counter Modules

Use the tables shown below for the following modules:

- 1734-VHSC5
- 1734-VHSC24 or 1738-VHSC24M23

The modules support 3 different consumed output data assemblies. The Active Output Assembly field of the Configuration assembly selects which output assembly will be used. Assembly 105 is the default. Other produced assemblies are possible but require separate configuration of the module. For more information regarding the specific fields of these assemblies, consult the product's user manual.

**Table 57 - Produced Input Data Assembly 102**

Byte	Bit 7	Bit 6	Bit 5	Bit 4	Bit 3	Bit 2	Bit 1	Bit 0
0	Stored Channel Data [Low Byte]							
1	Stored Channel Data [1]							
2	Stored Channel Data [2]							
3	Stored Channel Data [High Byte]							
4	Status (Low Byte)							
5	Status (High Byte)							

**Table 58 - Consumed Output Data Assembly 105**

Byte	Bit 7	Bit 6	Bit 5	Bit 4	Bit 3	Bit 2	Bit 1	Bit 0
0	Counter Control							
1	Output Control							

**Table 59 - Consumed Output Data Assembly 106**

Byte	Bit 7	Bit 6	Bit 5	Bit 4	Bit 3	Bit 2	Bit 1	Bit 0
0	PWM Value (Low Byte)							
1	PWM Value (High Byte)							

**Table 60 - Consumed Output Data Assembly 107**

Byte	Bit 7	Bit 6	Bit 5	Bit 4	Bit 3	Bit 2	Bit 1	Bit 0
0	PWM Value (Low Byte)							
1	PWM Value (High Byte)							
2	Counter Control							
3	Output Control							

**Table 61 - Configuration Assembly Instance 108**

Byte	Bit 7	Bit 6	Bit 5	Bit 4	Bit 3	Bit 2	Bit 1	Bit 0
0	Counter Configuration							
1	Filter Selection							
2	Decimal Position							
3	Active Output Assembly							
4	Time Base or PWM Period (low byte)							
5	Time Base or PWM Period (high byte)							
6	Gate Interval							
7	Scalar							
8	Output 0 Ties							
9	Output 1 Ties							
10	Rollover Value [Low Byte]							
11	Rollover Value [1]							
12	Rollover Value [2]							
13	Rollover Value [High Byte]							
14	Preset Value [Low Byte]							
15	Preset Value [1]							
16	Preset Value [2]							
17	Preset Value [High Byte]							
18	ON Value # 1 [Low Byte]							
19	ON Value # 1 [1]							
20	ON Value # 1 [2]							
21	ON Value # 1 [High Byte]							
22	OFF Value #1 [Low Byte]							

**Table 61 - Configuration Assembly Instance 108**

Byte	Bit 7	Bit 6	Bit 5	Bit 4	Bit 3	Bit 2	Bit 1	Bit 0
23	OFF Value #1 [1]							
24	OFF Value #1 [2]							
25	OFF Value #1 [High Byte]							
26	ON Value # 2 [Low Byte]							
27	ON Value # 2 [1]							
28	ON Value # 2 [2]							
29	ON Value # 2 [High Byte]							
30	OFF Value #2 [Low Byte]							
31	OFF Value #2 [1]							
32	OFF Value #2 [2]							
33	OFF Value #2 [High Byte]							
34	ON Value # 3 [Low Byte]							
35	ON Value # 3 [1]							
36	ON Value # 3 [2]							
37	ON Value # 3 [High Byte]							
38	OFF Value #3 [Low Byte]							
39	OFF Value #3 [1]							
40	OFF Value #3 [2]							
41	OFF Value #3 [High Byte]							
42	ON Value # 4 [Low Byte]							
43	ON Value # 4 [1]							
44	ON Value # 4 [2]							
45	ON Value # 4 [High Byte]							
46	OFF Value #4 [Low Byte]							
47	OFF Value #4 [1]							
48	OFF Value #4 [2]							
49	OFF Value #4 [High Byte]							
50	PWM Safe State Value (low byte)							
51	PWM Safe State Value (high byte)							
52	Counter Control SSV							
53	Output Control SSV							

## Counter Modules

Use the tables shown below for the following modules:

- 1734-IJ or 1738-IJM23
- 1734-IK

The modules support 3 different consumed input data assemblies. The produced input assembly can be set with the Requested Change of State Produce Assembly filed of the Configuration assembly. Assembly 102 is the default produced assembly. For more information regarding the specific fields of these assemblies, consult the product's user manual.

**Table 62 - Configuration Assembly Instance 123**

Byte	Bit 7	Bit 6	Bit 5	Bit 4	Bit 3	Bit 2	Bit 1	Bit 0
0	Counter Configuration							
1	Filter Selection							
2	Decimal Position							
3	Reserved							
4	Time Base (low byte)							
5	Time Base (high byte)							
6	Gate Interval							
7	Scalar							
8	Rollover Value [Low Byte]							
9	Rollover Value [1]							
10	Rollover Value [2]							
11	Rollover Value [High Byte]							
12	Preset Value [Low Byte]							
13	Preset Value [1]							
14	Preset Value [2]							
15	Preset Value [High Byte]							
16	Counter Control SSV							
17	Reserved (set to 0)							

**Table 63 - Produced Input Data Assembly 102**

Byte	Bit 7	Bit 6	Bit 5	Bit 4	Bit 3	Bit 2	Bit 1	Bit 0
0	Stored Channel Data [Low Byte]							
1	Stored Channel Data [1]							
2	Stored Channel Data [2]							
3	Stored Channel Data [High Byte]							
4	Status (Low Byte)							
5	Status (High Byte)							

**Table 64 - Consumed Output Data Assembly 105**

Byte	Bit 7	Bit 6	Bit 5	Bit 4	Bit 3	Bit 2	Bit 1	Bit 0
0	Counter Control							

## Two-channel Analog Input Modules

Use the tables shown below for the following modules:

- 1734-IE2C
- 1734-IE2V
- 1738-IE2CM12 or 1738-IE2VM12

**Table 65 - Configuration Assembly Instance 123**

Byte	Bit 7	Bit 6	Bit 5	Bit 4	Bit 3	Bit 2	Bit 1	Bit 0
0	Low Engineering Channel 0 (Low Byte)							
1	Low Engineering Channel 0 (High Byte)							
2	High Engineering Channel 0 (Low Byte)							
3	High Engineering Channel 0 (High Byte)							
4	Digital Filter Channel 0 (Low Byte)							
5	Digital Filter Channel 0 (High Byte)							
6	Low Alarm Channel 0 (Low Byte)							
7	Low Alarm Channel 0 (High Byte)							
8	High Alarm Channel 0 (Low Byte)							
9	High Alarm Channel 0 (High Byte)							
10	Low Low Alarm Channel 0 (Low Byte)							
11	Low Low Alarm Channel 0 (High Byte)							
12	High High Alarm Channel 0 (Low Byte)							
13	High High Alarm Channel 0 (High Byte)							
14	Range Channel 0							
15	Alarm Latch Channel 0							
16	Alarm Disable Channel 0							
17	Alignment (reserved = 0)							
18	Low Engineering Channel 1 (Low Byte)							
19	Low Engineering Channel 1 (High Byte)							
20	High Engineering Channel 1 (Low Byte)							
21	High Engineering Channel 1 (High Byte)							
22	Digital Filter Channel 1 (Low Byte)							
23	Digital Filter Channel 1 (High Byte)							
24	Low Alarm Channel 1 (Low Byte)							
25	Low Alarm Channel 1 (High Byte)							
26	High Alarm Channel 1 (Low Byte)							
27	High Alarm Channel 1 (High Byte)							
28	Low Low Alarm Channel 1 (Low Byte)							
29	Low Low Alarm Channel 1 (High Byte)							
30	High High Alarm Channel 1 (Low Byte)							



**Table 65 - Configuration Assembly Instance 123**

Byte	Bit 7	Bit 6	Bit 5	Bit 4	Bit 3	Bit 2	Bit 1	Bit 0
31	High High Alarm Channel 1 (High Byte)							
32	Range Channel 1							
33	Alarm Latch Channel 1							
34	Alarm Disable Channel 1							
35	Notch Filter							
36	Update Rate (Low Byte)							
37	Update Rate (High Byte)							

**Table 66 - Produced Input Data Assembly 101**

Byte	Bit 7	Bit 6	Bit 5	Bit 4	Bit 3	Bit 2	Bit 1	Bit 0
0	Channel 0 Data (Low Byte)							
1	Channel 0 Data (High Byte)							
2	Channel 1 Data (Low Byte)							
3	Channel 1 Data (High Byte)							
4	Channel 0 Status							
5	Channel 1 Status							

## Four-channel Analog Input Modules

Use the tables shown below for the following modules:

- 1734-IE4C
- 1738-IE4CM12 or 1738-IE4VM12

**Table 67 - Configuration Assembly Instance 123**

Byte	Bit 7	Bit 6	Bit 5	Bit 4	Bit 3	Bit 2	Bit 1	Bit 0
0	Low Engineering Channel 0 (Low Byte)							
1	Low Engineering Channel 0 (High Byte)							
2	High Engineering Channel 0 (Low Byte)							
3	High Engineering Channel 0 (High Byte)							
4	Digital Filter Channel 0 (Low Byte)							
5	Digital Filter Channel 0 (High Byte)							
6	Low Alarm Channel 0 (Low Byte)							
7	Low Alarm Channel 0 (High Byte)							
8	High Alarm Channel 0 (Low Byte)							
9	High Alarm Channel 0 (High Byte)							
10	Low Low Alarm Channel 0 (Low Byte)							
11	Low Low Alarm Channel 0 (High Byte)							
12	High High Alarm Channel 0 (Low Byte)							

**Table 67 - Configuration Assembly Instance 123**

Byte	Bit 7	Bit 6	Bit 5	Bit 4	Bit 3	Bit 2	Bit 1	Bit 0
13	High High Alarm Channel 0 (High Byte)							
14	Range Channel 0							
15	Alarm Latch Channel 0							
16	Alarm Disable Channel 0							
17	Alignment (reserved = 0)							
18	Low Engineering Channel 1 (Low Byte)							
19	Low Engineering Channel 1 (High Byte)							
20	High Engineering Channel 1 (Low Byte)							
21	High Engineering Channel 1 (High Byte)							
22	Digital Filter Channel 1 (Low Byte)							
23	Digital Filter Channel 1 (High Byte)							
24	Low Alarm Channel 1 (Low Byte)							
25	Low Alarm Channel 1 (High Byte)							
26	High Alarm Channel 1 (Low Byte)							
27	High Alarm Channel 1 (High Byte)							
28	Low Low Alarm Channel 1 (Low Byte)							
29	Low Low Alarm Channel 1 (High Byte)							
30	High High Alarm Channel 1 (Low Byte)							
31	High High Alarm Channel 1 (High Byte)							
32	Range Channel 1							
33	Alarm Latch Channel 1							
34	Alarm Disable Channel 1							
35	Alignment (reserved = 0)							
36	Low Engineering Channel 2 (Low Byte)							
37	Low Engineering Channel 2 (High Byte)							
38	High Engineering Channel 2 (Low Byte)							
39	High Engineering Channel 2 (High Byte)							
40	Digital Filter Channel 2 (Low Byte)							
41	Digital Filter Channel 2 (High Byte)							
42	Low Alarm Channel 2 (Low Byte)							
43	Low Alarm Channel 2 (High Byte)							
44	High Alarm Channel 2 (Low Byte)							
45	High Alarm Channel 2 (High Byte)							
46	Low Low Alarm Channel 2 (Low Byte)							
47	Low Low Alarm Channel 2 (High Byte)							
48	High High Alarm Channel 2 (Low Byte)							
49	High High Alarm Channel 2 (High Byte)							
50	Range Channel 2							
51	Alarm Latch Channel 2							

**Table 67 - Configuration Assembly Instance 123**

Byte	Bit 7	Bit 6	Bit 5	Bit 4	Bit 3	Bit 2	Bit 1	Bit 0
52	Alarm Disable Channel 2							
53	Alignment (reserved = 0)							
54	Low Engineering Channel 3 (Low Byte)							
55	Low Engineering Channel 3 (High Byte)							
56	High Engineering Channel 3 (Low Byte)							
57	High Engineering Channel 3 (High Byte)							
58	Digital Filter Channel 3 (Low Byte)							
59	Digital Filter Channel 3 (High Byte)							
60	Low Alarm Channel 3 (Low Byte)							
61	Low Alarm Channel 3 (High Byte)							
62	High Alarm Channel 3 (Low Byte)							
63	High Alarm Channel 3 (High Byte)							
64	Low Low Alarm Channel 3 (Low Byte)							
65	Low Low Alarm Channel 3 (High Byte)							
66	High High Alarm Channel 3 (Low Byte)							
67	High High Alarm Channel 3 (High Byte)							
68	Range Channel 3							
69	Alarm Latch Channel 3							
70	Alarm Disable Channel 3							
71	Notch Filter							
72	Update Rate (Low Byte)							
73	Update Rate (High Byte)							

**Table 68 - Produced Input Data Assembly 101**

Byte	Bit 7	Bit 6	Bit 5	Bit 4	Bit 3	Bit 2	Bit 1	Bit 0
0	Channel 0 Data (Low Byte)							
1	Channel 0 Data (High Byte)							
2	Channel 1 Data (Low Byte)							
3	Channel 1 Data (High Byte)							
4	Channel 2 Data (Low Byte)							
5	Channel 2 Data (High Byte)							
6	Channel 3 Data (Low Byte)							
7	Channel 3 Data (High Byte)							
8	Channel 0 Status							
9	Channel 1 Status							
10	Channel 2 Status							
11	Channel 3 Status							

## Eight-channel Analog Input Modules

Use the tables shown below for the following modules:

- 1734-IE8C
- 1734-IE8V

**Table 69 - Configuration Assembly Instance 123**

Byte	Bit 7	Bit 6	Bit 5	Bit 4	Bit 3	Bit 2	Bit 1	Bit 0
0	Low Engineering Channel 0 (Low Byte)							
1	Low Engineering Channel 0 (High Byte)							
2	High Engineering Channel 0 (Low Byte)							
3	High Engineering Channel 0 (High Byte)							
4	Digital Filter Channel 0 (Low Byte)							
5	Digital Filter Channel 0 (High Byte)							
6	Low Alarm Channel 0 (Low Byte)							
7	Low Alarm Channel 0 (High Byte)							
8	High Alarm Channel 0 (Low Byte)							
9	High Alarm Channel 0 (High Byte)							
10	Low Low Alarm Channel 0 (Low Byte)							
11	Low Low Alarm Channel 0 (High Byte)							
12	High High Alarm Channel 0 (Low Byte)							
13	High High Alarm Channel 0 (High Byte)							
14	Range Channel 0							
15	Alarm Latch Channel 0							
16	Alarm Disable Channel 0							
17	Alignment (reserved = 0)							
18	Low Engineering Channel 1 (Low Byte)							
19	Low Engineering Channel 1 (High Byte)							
20	High Engineering Channel 1 (Low Byte)							
21	High Engineering Channel 1 (High Byte)							
22	Digital Filter Channel 1 (Low Byte)							
23	Digital Filter Channel 1 (High Byte)							
24	Low Alarm Channel 1 (Low Byte)							
25	Low Alarm Channel 1 (High Byte)							
26	High Alarm Channel 1 (Low Byte)							
27	High Alarm Channel 1 (High Byte)							
28	Low Low Alarm Channel 1 (Low Byte)							
29	Low Low Alarm Channel 1 (High Byte)							
30	High High Alarm Channel 1 (Low Byte)							
31	High High Alarm Channel 1 (High Byte)							

**Table 69 - Configuration Assembly Instance 123**

Byte	Bit 7	Bit 6	Bit 5	Bit 4	Bit 3	Bit 2	Bit 1	Bit 0
32	Range Channel 1							
33	Alarm Latch Channel 1							
34	Alarm Disable Channel 1							
35	Alignment (reserved = 0)							
36	Low Engineering Channel 2 (Low Byte)							
37	Low Engineering Channel 2 (High Byte)							
38	High Engineering Channel 2 (Low Byte)							
39	High Engineering Channel 2 (High Byte)							
40	Digital Filter Channel 2 (Low Byte)							
41	Digital Filter Channel 2 (High Byte)							
42	Low Alarm Channel 2 (Low Byte)							
43	Low Alarm Channel 2 (High Byte)							
44	High Alarm Channel 2 (Low Byte)							
45	High Alarm Channel 2 (High Byte)							
46	Low Low Alarm Channel 2 (Low Byte)							
47	Low Low Alarm Channel 2 (High Byte)							
48	High High Alarm Channel 2 (Low Byte)							
49	High High Alarm Channel 2 (High Byte)							
50	Range Channel 2							
51	Alarm Latch Channel 2							
52	Alarm Disable Channel 2							
53	Alignment (reserved = 0)							
54	Low Engineering Channel 3 (Low Byte)							
55	Low Engineering Channel 3 (High Byte)							
56	High Engineering Channel 3 (Low Byte)							
57	High Engineering Channel 3 (High Byte)							
58	Digital Filter Channel 3 (Low Byte)							
59	Digital Filter Channel 3 (High Byte)							
60	Low Alarm Channel 3 (Low Byte)							
61	Low Alarm Channel 3 (High Byte)							
62	High Alarm Channel 3 (Low Byte)							
63	High Alarm Channel 3 (High Byte)							
64	Low Low Alarm Channel 3 (Low Byte)							
65	Low Low Alarm Channel 3 (High Byte)							
66	High High Alarm Channel 3 (Low Byte)							
67	High High Alarm Channel 3 (High Byte)							
68	Range Channel 3							
69	Alarm Latch Channel 3							
70	Alarm Disable Channel 3							

**Table 69 - Configuration Assembly Instance 123**

Byte	Bit 7	Bit 6	Bit 5	Bit 4	Bit 3	Bit 2	Bit 1	Bit 0
71	Alignment (reserved = 0)							
72	Low Engineering Channel 4 (Low Byte)							
73	Low Engineering Channel 4 (High Byte)							
74	High Engineering Channel 4 (Low Byte)							
75	High Engineering Channel 4 (High Byte)							
76	Digital Filter Channel 4 (Low Byte)							
77	Digital Filter Channel 4 (High Byte)							
78	Low Alarm Channel 4 (Low Byte)							
79	Low Alarm Channel 4 (High Byte)							
80	High Alarm Channel 4 (Low Byte)							
81	High Alarm Channel 4 (High Byte)							
82	Low Low Alarm Channel 4 (Low Byte)							
83	Low Low Alarm Channel 4 (High Byte)							
84	High High Alarm Channel 4 (Low Byte)							
85	High High Alarm Channel 4 (High Byte)							
86	Range Channel 4							
87	Alarm Latch Channel 4							
88	Alarm Disable Channel 4							
89	Alignment (reserved = 0)							
90	Low Engineering Channel 5 (Low Byte)							
91	Low Engineering Channel 5 (High Byte)							
92	High Engineering Channel 5 (Low Byte)							
93	High Engineering Channel 5 (High Byte)							
94	Digital Filter Channel 5 (Low Byte)							
95	Digital Filter Channel 5 (High Byte)							
96	Low Alarm Channel 5 (Low Byte)							
97	Low Alarm Channel 5 (High Byte)							
98	High Alarm Channel 5 (Low Byte)							
99	High Alarm Channel 5 (High Byte)							
100	Low Low Alarm Channel 5 (Low Byte)							
101	Low Low Alarm Channel 5 (High Byte)							
102	High High Alarm Channel 5 (Low Byte)							
103	High High Alarm Channel 5 (High Byte)							
104	Range Channel 5							
105	Alarm Latch Channel 5							
106	Alarm Disable Channel 5							
107	Alignment (reserved = 0)							
108	Low Engineering Channel 6 (Low Byte)							
109	Low Engineering Channel 6 (High Byte)							

**Table 69 - Configuration Assembly Instance 123**

Byte	Bit 7	Bit 6	Bit 5	Bit 4	Bit 3	Bit 2	Bit 1	Bit 0
110	High Engineering Channel 6 (Low Byte)							
111	High Engineering Channel 6 (High Byte)							
112	Digital Filter Channel 6 (Low Byte)							
113	Digital Filter Channel 6 (High Byte)							
114	Low Alarm Channel 6 (Low Byte)							
115	Low Alarm Channel 6 (High Byte)							
116	High Alarm Channel 6 (Low Byte)							
117	High Alarm Channel 6 (High Byte)							
118	Low Low Alarm Channel 6 (Low Byte)							
119	Low Low Alarm Channel 6 (High Byte)							
120	High High Alarm Channel 6 (Low Byte)							
121	High High Alarm Channel 6 (High Byte)							
122	Range Channel 6							
123	Alarm Latch Channel 6							
124	Alarm Disable Channel 6							
125	Alignment (reserved = 0)							
126	Low Engineering Channel 7 (Low Byte)							
127	Low Engineering Channel 7 (High Byte)							
128	High Engineering Channel 7 (Low Byte)							
129	High Engineering Channel 7 (High Byte)							
130	Digital Filter Channel 7 (Low Byte)							
131	Digital Filter Channel 7 (High Byte)							
132	Low Alarm Channel 7 (Low Byte)							
133	Low Alarm Channel 7 (High Byte)							
134	High Alarm Channel 7 (Low Byte)							
135	High Alarm Channel 7 (High Byte)							
136	Low Low Alarm Channel 7 (Low Byte)							
137	Low Low Alarm Channel 7 (High Byte)							
138	High High Alarm Channel 7 (Low Byte)							
139	High High Alarm Channel 7 (High Byte)							
140	Range Channel 7							
141	Alarm Latch Channel 7							
142	Alarm Disable Channel 7							
143	Notch Filter							
144	Update Rate (Low Byte)							
145	Update Rate (High Byte)							

**Table 70 - Produced Input Data Assembly 101**

Byte	Bit 7	Bit 6	Bit 5	Bit 4	Bit 3	Bit 2	Bit 1	Bit 0
0	Channel 0 Data (Low Byte)							
1	Channel 0 Data (High Byte)							
2	Channel 1 Data (Low Byte)							
3	Channel 1 Data (High Byte)							
4	Channel 2 Data (Low Byte)							
5	Channel 2 Data (High Byte)							
6	Channel 3 Data (Low Byte)							
7	Channel 3 Data (High Byte)							
8	Channel 4 Data (Low Byte)							
9	Channel 4 Data (High Byte)							
10	Channel 5 Data (Low Byte)							
11	Channel 5 Data (High Byte)							
12	Channel 6 Data (Low Byte)							
13	Channel 6 Data (High Byte)							
14	Channel 7 Data (Low Byte)							
15	Channel 7 Data (High Byte)							
16	Channel 0 Status							
17	Channel 1 Status							
18	Channel 2 Status							
19	Channel 3 Status							
20	Channel 4 Status							
21	Channel 5 Status							
22	Channel 6 Status							
23	Channel 7 Status							

## Two-channel Analog Output Modules

Use the tables shown below for the following modules:

- 1734-OE2C
- 1734-OE2V
- 1738-OE2CM12 or 1738-OE2VM12

**Table 71 - Configuration Assembly Instance 123**

Byte	Bit 7	Bit 6	Bit 5	Bit 4	Bit 3	Bit 2	Bit 1	Bit 0
0	Fault Data Channel 0 (Low Byte)							
1	Fault Data Channel 0 (High Byte)							
2	Idle Data Channel 0 (Low Byte)							



**Table 71 - Configuration Assembly Instance 123**

Byte	Bit 7	Bit 6	Bit 5	Bit 4	Bit 3	Bit 2	Bit 1	Bit 0
3	Idle Data Channel 0 (High Byte)							
4	Low Engineering Channel 0 (Low Byte)							
5	Low Engineering Channel 0 (High Byte)							
6	High Engineering Channel 0 (Low Byte)							
7	High Engineering Channel 0 (High Byte)							
8	Low Clamp Channel 0 (Low Byte)							
9	Low Clamp Channel 0 (High Byte)							
10	High Clamp Channel 0 (Low Byte)							
11	High Clamp Channel 0 (High Byte)							
12	Range Channel 0							
13	Fault Action Channel 0							
14	Idle Action Channel 0							
15	Alarm Latch Channel 0							
16	Alarm Disable Channel 0							
17	Alignment (reserved = 0)							
18	Fault Data Channel 1 (Low Byte)							
19	Fault Data Channel 1 (High Byte)							
20	Idle Data Channel 1 (Low Byte)							
21	Idle Data Channel 1 (High Byte)							
22	Low Engineering Channel 1 (Low Byte)							
23	Low Engineering Channel 1 (High Byte)							
24	High Engineering Channel 1 (Low Byte)							
25	High Engineering Channel 1 (High Byte)							
26	Low Clamp Channel 1 (Low Byte)							
27	Low Clamp Channel 1 (High Byte)							
28	High Clamp Channel 1 (Low Byte)							
29	High Clamp Channel 1 (High Byte)							
30	Range Channel 1							
31	Fault Action Channel 1							
32	Idle Action Channel 1							
33	Alarm Latch Channel 1							
34	Alarm Disable Channel 1							
35	Alignment (reserved = 0)							

**Table 72 - Produced Input Data Assembly 101**

Byte	Bit 7	Bit 6	Bit 5	Bit 4	Bit 3	Bit 2	Bit 1	Bit 0
0	Channel 0 Status							
1	Channel 1 Status							

**Table 73 - Consumed Output Data Assembly 102**

Byte	Bit 7	Bit 6	Bit 5	Bit 4	Bit 3	Bit 2	Bit 1	Bit 0
0	Channel 0 Data (Low Byte)							
1	Channel 0 Data (High Byte)							
2	Channel 1 Data (Low Byte)							
3	Channel 1 Data (High Byte)							

## Four-channel Analog Output Modules

Use the tables shown below for the following modules:

- 1734-OE4C
- 1738-OE4CM12 or 1738-OE4VM12

**Table 74 - Configuration Assembly Instance 123**

Byte	Bit 7	Bit 6	Bit 5	Bit 4	Bit 3	Bit 2	Bit 1	Bit 0
0	Fault Data Channel 0 (Low Byte)							
1	Fault Data Channel 0 (High Byte)							
2	Idle Data Channel 0 (Low Byte)							
3	Idle Data Channel 0 (High Byte)							
4	Low Engineering Channel 0 (Low Byte)							
5	Low Engineering Channel 0 (High Byte)							
6	High Engineering Channel 0 (Low Byte)							
7	High Engineering Channel 0 (High Byte)							
8	Low Clamp Channel 0 (Low Byte)							
9	Low Clamp Channel 0 (High Byte)							
10	High Clamp Channel 0 (Low Byte)							
11	High Clamp Channel 0 (High Byte)							
12	Range Channel 0							
13	Fault Action Channel 0							
14	Idle Action Channel 0							
15	Alarm Latch Channel 0							
16	Alarm Disable Channel 0							
17	Alignment (reserved = 0)							
18	Fault Data Channel 1 (Low Byte)							
19	Fault Data Channel 1 (High Byte)							
20	Idle Data Channel 1 (Low Byte)							
21	Idle Data Channel 1 (High Byte)							
22	Low Engineering Channel 1 (Low Byte)							
23	Low Engineering Channel 1 (High Byte)							

**Table 74 - Configuration Assembly Instance 123**

Byte	Bit 7	Bit 6	Bit 5	Bit 4	Bit 3	Bit 2	Bit 1	Bit 0
24	High Engineering Channel 1 (Low Byte)							
25	High Engineering Channel 1 (High Byte)							
26	Low Clamp Channel 1 (Low Byte)							
27	Low Clamp Channel 1 (High Byte)							
28	High Clamp Channel 1 (Low Byte)							
29	High Clamp Channel 1 (High Byte)							
30	Range Channel 1							
31	Fault Action Channel 1							
32	Idle Action Channel 1							
33	Alarm Latch Channel 1							
34	Alarm Disable Channel 1							
35	Alignment (reserved = 0)							
36	Fault Data Channel 2 (Low Byte)							
37	Fault Data Channel 2 (High Byte)							
38	Idle Data Channel 2 (Low Byte)							
39	Idle Data Channel 2 (High Byte)							
40	Low Engineering Channel 2 (Low Byte)							
41	Low Engineering Channel 2 (High Byte)							
42	High Engineering Channel 2 (Low Byte)							
43	High Engineering Channel 2 (High Byte)							
44	Low Clamp Channel 2 (Low Byte)							
45	Low Clamp Channel 2 (High Byte)							
46	High Clamp Channel 2 (Low Byte)							
47	High Clamp Channel 2 (High Byte)							
48	Range Channel 2							
49	Fault Action Channel 2							
50	Idle Action Channel 2							
51	Alarm Latch Channel 2							
52	Alarm Disable Channel 2							
53	Alignment (reserved = 0)							
54	Fault Data Channel 3 (Low Byte)							
55	Fault Data Channel 3 (High Byte)							
56	Idle Data Channel 3 (Low Byte)							
57	Idle Data Channel 3 (High Byte)							
58	Low Engineering Channel 3 (Low Byte)							
59	Low Engineering Channel 3 (High Byte)							
60	High Engineering Channel 3 (Low Byte)							
61	High Engineering Channel 3 (High Byte)							
62	Low Clamp Channel 3 (Low Byte)							

**Table 74 - Configuration Assembly Instance 123**

Byte	Bit 7	Bit 6	Bit 5	Bit 4	Bit 3	Bit 2	Bit 1	Bit 0
63	Low Clamp Channel 3 (High Byte)							
64	High Clamp Channel 3 (Low Byte)							
65	High Clamp Channel 3 (High Byte)							
66	Range Channel 3							
67	Fault Action Channel 3							
68	Idle Action Channel 3							
69	Alarm Latch Channel 3							
70	Alarm Disable Channel 3							
71	Alignment (reserved = 0)							

**Table 75 - Produced Input Data Assembly 101**

Byte	Bit 7	Bit 6	Bit 5	Bit 4	Bit 3	Bit 2	Bit 1	Bit 0
0	Channel 0 Status							
1	Channel 1 Status							
2	Channel 2 Status							
3	Channel 3 Status							

**Table 76 - Consumed Output Data Assembly 102**

Byte	Bit 7	Bit 6	Bit 5	Bit 4	Bit 3	Bit 2	Bit 1	Bit 0
0	Channel 0 Data (Low Byte)							
1	Channel 0 Data (High Byte)							
2	Channel 1 Data (Low Byte)							
3	Channel 1 Data (High Byte)							
4	Channel 2 Data (Low Byte)							
5	Channel 2 Data (High Byte)							
6	Channel 3 Data (Low Byte)							
7	Channel 3 Data (High Byte)							

## Two-channel RTD Input Modules

Use the tables shown below for the following modules:

- 1734-IR2
- 1734-IR2E or 1738-IR2M12

**Table 77 - Configuration Assembly Instance 123**

Byte	Bit 7	Bit 6	Bit 5	Bit 4	Bit 3	Bit 2	Bit 1	Bit 0
0	Low Engineering Channel 0 (Low Byte)							
1	Low Engineering Channel 0 (High Byte)							
2	High Engineering Channel 0 (Low Byte)							
3	High Engineering Channel 0 (High Byte)							
4	Digital Filter Channel 0 (Low Byte)							
5	Digital Filter Channel 0 (High Byte)							
6	Low Alarm Channel 0 (Low Byte)							
7	Low Alarm Channel 0 (High Byte)							
8	High Alarm Channel 0 (Low Byte)							
9	High Alarm Channel 0 (High Byte)							
10	Low Low Alarm Channel 0 (Low Byte)							
11	Low Low Alarm Channel 0 (High Byte)							
12	High High Alarm Channel 0 (Low Byte)							
13	High High Alarm Channel 0 (High Byte)							
14	Alarm Latch Channel 0							
15	Alarm Disable Channel 0							
16	Sensor Type Channel 0							
17	Temperature Units Channel 0							
18	Low Engineering Channel 1 (Low Byte)							
19	Low Engineering Channel 1 (High Byte)							
20	High Engineering Channel 1 (Low Byte)							
21	High Engineering Channel 1 (High Byte)							
22	Digital Filter Channel 1 (Low Byte)							
23	Digital Filter Channel 1 (High Byte)							
24	Low Alarm Channel 1 (Low Byte)							
25	Low Alarm Channel 1 (High Byte)							
26	High Alarm Channel 1 (Low Byte)							
27	High Alarm Channel 1 (High Byte)							
28	Low Low Alarm Channel 1 (Low Byte)							
29	Low Low Alarm Channel 1 (High Byte)							
30	High High Alarm Channel 1 (Low Byte)							
31	High High Alarm Channel 1 (High Byte)							
32	Alarm Latch Channel 1							
33	Alarm Disable Channel 1							
34	Sensor Type Channel 1							
35	Temperature Units Channel 1							
36	Notch Filter							
37	Alignment (reserved = 0)							

**Table 78 - Produced Input Data Assembly 101**

Byte	Bit 7	Bit 6	Bit 5	Bit 4	Bit 3	Bit 2	Bit 1	Bit 0
0	Channel 0 Data (Low Byte)							
1	Channel 0 Data (High Byte)							
2	Channel 1 Data (Low Byte)							
3	Channel 1 Data (High Byte)							
4	Channel 0 Status							
5	Channel 1 Status							

## Two-channel Thermocouple Input Modules

Use the tables shown below for the following modules:

- 1734-IT2I or 1738-IT2IM12

**Table 79 - Configuration Assembly Instance 103**

Byte	Bit 7	Bit 6	Bit 5	Bit 4	Bit 3	Bit 2	Bit 1	Bit 0
0	Cold Junction Notch Filter							
1	Cold Junction Produced							
2	Low Engineering Channel 0 (Low Byte)							
3	Low Engineering Channel 0 (High Byte)							
4	High Engineering Channel 0 (Low Byte)							
5	High Engineering Channel 0 (High Byte)							
6	Alarm Disable Channel 0							
7	Alarm Latch Channel 0							
8	Notch Filter Channel 0							
9	Sensor Type Channel 0							
10	Digital Filter Channel 0 (Low Byte)							
11	Digital Filter Channel 0 (High Byte)							
12	Low Alarm Channel 0 (Low Byte)							
13	Low Alarm Channel 0 (High Byte)							
14	High Alarm Channel 0 (Low Byte)							
15	High Alarm Channel 0 (High Byte)							
16	Low Low Alarm Channel 0 (Low Byte)							
17	Low Low Alarm Channel 0 (High Byte)							
18	High High Alarm Channel 0 (Low Byte)							
19	High High Alarm Channel 0 (High Byte)							
20	Temperature Units Channel 0							
21	Cold Junction Enable Chan 0							
22	Cold Junction Offset Chan 0 (Low Byte)							

**Table 79 - Configuration Assembly Instance 103**

Byte	Bit 7	Bit 6	Bit 5	Bit 4	Bit 3	Bit 2	Bit 1	Bit 0
23	Cold Junction Offset Chan 0 (High Byte)							
24	Low Engineering Channel 1 (Low Byte)							
25	Low Engineering Channel 1 (High Byte)							
26	High Engineering Channel 1 (Low Byte)							
27	High Engineering Channel 1 (High Byte)							
28	Alarm Disable Channel 1							
29	Alarm Latch Channel 1							
30	Notch Filter Channel 1							
31	Sensor Type Channel 1							
32	Digital Filter Channel 1 (Low Byte)							
33	Digital Filter Channel 1 (High Byte)							
34	Low Alarm Channel 1 (Low Byte)							
35	Low Alarm Channel 1 (High Byte)							
36	High Alarm Channel 1 (Low Byte)							
37	High Alarm Channel 1 (High Byte)							
38	Low Low Alarm Channel 1 (Low Byte)							
39	Low Low Alarm Channel 1 (High Byte)							
40	High High Alarm Channel 1 (Low Byte)							
41	High High Alarm Channel 1 (High Byte)							
42	Temperature Units Channel 1							
43	Cold Junction Enable Chan 1							
44	Cold Junction Offset Chan 1 (Low Byte)							
45	Cold Junction Offset Chan 1 (High Byte)							

**Table 80 - Produced Input Data Assembly 101**

Byte	Bit 7	Bit 6	Bit 5	Bit 4	Bit 3	Bit 2	Bit 1	Bit 0
0	Channel 0 Data (Low Byte)							
1	Channel 0 Data (High Byte)							
2	Channel 1 Data (Low Byte)							
3	Channel 1 Data (High Byte)							
4	Channel 0 Status							
5	Channel 1 Status							
6	CJC Data (Low Byte)							
7	CJC Data (High Byte)							

## Synchronous Serial Interface Modules

Use the tables shown below for the following modules:

- 1734-SSI or 1738-SSIM12

**Table 81 - Configuration Assembly Instance 123**

Byte	Bit 7	Bit 6	Bit 5	Bit 4	Bit 3	Bit 2	Bit 1	Bit 0
0	Run							
1	Gray/Binary							
2	SSI Word Length							
3	Data Rate							
4	Gray to Binary Conversion							
5	Standardization							
6	SSI Word Delay Time (Low Byte)							
7	SSI Word Delay Time (High Byte)							
8	Trailing bits							
9	Latch Input Control							
10	Sensor Resolution (Low Byte)							
11	Sensor Resolution (High Byte)							
12	Sensor Cycles (Low Byte)							
13	Sensor Cycles (High Byte)							
14	SSI Word Filter Control							
15	Alignment (reserved = 0)							
16	Comparator 1 Value [Low Byte]							
17	Comparator 1 Value [1]							
18	Comparator 1 Value [2]							
19	Comparator 1 Value [High Byte]							
20	Comparator 2 Value [Low Byte]							
21	Comparator 2 Value [1]							
22	Comparator 2 Value [2]							
23	Comparator 2 Value [High Byte]							
24	Comparator 1 Control							
25	Comparator 2 Control							

**Table 82 - Produced Input Data Assembly 101**

Byte	Bit 7	Bit 6	Bit 5	Bit 4	Bit 3	Bit 2	Bit 1	Bit 0
0	Present SSI Word [Low Byte]							
1	Present SSI Word [1]							
2	Present SSI Word [2]							
3	Present SSI Word [High Byte]							
4	Latched SSI Word [Low Byte]							
5	Latched SSI Word [1]							
6	Latched SSI Word [2]							



**Table 82 - Produced Input Data Assembly 101**

Byte	Bit 7	Bit 6	Bit 5	Bit 4	Bit 3	Bit 2	Bit 1	Bit 0
7	Latched SSI Word [High Byte]							
8	Module Status (Low Byte)							
9	Module Status (High Byte)							

**Table 83 - Consumed Output Data Assembly 102**

Byte	Bit 7	Bit 6	Bit 5	Bit 4	Bit 3	Bit 2	Bit 1	Bit 0
0	Master Ack Byte Output Control							
1	Reserved = 0							

## Address Reserve Module

Use the table shown below for the 1734-ARM. This module has no configuration and does not consume any I/O data.

**Table 84 - Produced Input Data Assembly 4**

Byte	Bit 7	Bit 6	Bit 5	Bit 4	Bit 3	Bit 2	Bit 1	Bit 0
0	Reserved = 0							

## ASCII Interface Modules

Use the tables shown below for the following modules:

- 1734-232ASC
- 1734-485ASC
- 1738-232ASCM12 or 1738-48ASCM12

**Table 85 - Configuration Assembly Instance 103**

Byte	Bit 7	Bit 6	Bit 5	Bit 4	Bit 3	Bit 2	Bit 1	Bit 0
0	ASCII Serial Character Format							
1	ASCII Serial Comm Speed							
2	ASCII Max Number of Receive Characters							
3	ASCII Receive Record Start Mode							
4	ASCII Receive Start Delimiter							
5	ASCII Receive Record End Mode							
6	ASCII Receive End Delimiter							
7	ASCII Receive String Data Type							
8	ASCII Pad Mode							

**Table 85 - Configuration Assembly Instance 103**

Byte	Bit 7	Bit 6	Bit 5	Bit 4	Bit 3	Bit 2	Bit 1	Bit 0
9	ASCII Pad Character							
10	ASCII Receive Swap Mode							
11	Handshake Mode							
12	ASCII Max Number of Transmit Characters							
13	ASCII Transmit End Delimiter Mode							
14	ASCII Transmit End Delimiter Character							
15	ASCII Consume String Data Type							
16	ASCII Transmit Swap Mode							
17	Transmit Handshake Mode							

The format and length of the Produced and Consumed I/O assemblies vary with the configuration of the module. For more information regarding the specific fields of these assemblies and how they are impacted by the configuration, refer to the product user manual.

**Table 86 - Produced Input Data Assembly 101**

Byte	Bit 7	Bit 6	Bit 5	Bit 4	Bit 3	Bit 2	Bit 1	Bit 0
0	RX Transaction ID							
1	Status							
2	Reserved or Length <sup>(2)</sup>							
3	Reserved or Length <sup>(2)</sup>							
4	ASCII Data (from 1 to 128 bytes)							
N <sup>(1)</sup>	<CR> Terminator							

(1) The length of the assembly depends on the amount of ASCII Data transmitted.

(2) The meaning of these fields depends on the configuration of the module.

**Table 87 - Consumed Output Data Assembly 102**

Byte	Bit 7	Bit 6	Bit 5	Bit 4	Bit 3	Bit 2	Bit 1	Bit 0
0	Reserved							
1	TX Transaction ID							
2	Reserved							
3	Length							
4	ASCII Data (from 1 to 128 bytes)							
N <sup>(1)</sup>	<CR> Terminator							

(1) The length of the assembly depends on the amount of ASCII Data transmitted.

## Numerics

**16 bit numbers** 41  
**16-bit boundary** 14  
**1734/1738 I/O module**  
 assembly information 39  
**1734-ARM module** 15  
**6 bytes** 34

## A

**AC output**  
 modules 50  
 two-channel 49, 50  
**Active Output Assembly** 52  
**adapter**  
 data exchange 9  
**add hardware** 23  
**Address Reserve Module** 34  
**alignment** 13, 29  
 Byte 26, 29  
 Double Word 14, 17, 26, 29  
 Fixed Size per Slot 26, 33, 34, 35  
 option 33  
 Word 26, 29  
**alignment options** 13  
**analog I/O modules** 40  
**ARM module** 29  
**Array data** 41  
**assemblies**  
 configuration 49, 50  
 data 52  
 I/O 44, 46, 47  
 input 41, 42  
 produced 49, 52  
**Assembly** 29  
**assembly**  
 configuration 42, 52  
 connection 9, 23  
 consumed 30, 31, 33  
 consumed I/O 49  
 data 42  
 information 39  
 input data 44, 45, 46, 47  
 output data 45, 46, 47  
 produced 29, 30, 32, 34, 35  
 structure 29  
**assembly connection** 9, 13, 19  
 about 9  
 RSLogix5000 23  
 RSNetWorx for EtherNet/IP 19  
**Automatic Device Replacement** 15

## B

**boundaries** 13, 14  
 byte 17, 24  
 DINT 14  
 fixed 14  
**boundary**  
 16-bit 14  
 double word 14, 17

## Byte

data 14  
**byte** 14, 29  
 aligned 29  
 least significant 41  
 most significant 41  
**byte boundaries** 14

## C

**chassis** 29  
 size 22  
**chassis size** 13, 26  
**choose a connection** 9  
**CIP packets** 15  
**CompactLogix**  
 controllers 9  
**configuration** 13, 41, 51  
 assembly instance 39  
 connection 10  
 data 23  
 header 25, 26  
 setting tab 22  
 size 39  
 tag 25  
**configuration assemblies** 49  
**configuration assembly** 15, 42, 44, 45, 46, 47,  
 52  
**Configuration Setting**  
 tab 21  
**configure** 13  
 assembly connection 19  
**connection**  
 all-inclusive 9  
 assembly 9, 10, 13, 15, 19  
 backplane 10  
 choose 9  
 configuration 10  
 configuring 13  
 I/O 10, 13  
 listen only 10  
 Listen-Only 21  
 name 21  
 originator 10, 15, 20  
 parameters 24  
 points 10  
 properties 20  
 Rack Optimized 9  
 request 15, 16, 27  
 size 16, 21  
 sizes 21  
 style 10  
 styles 10  
 tab 21  
**connection name** 21  
**connection points** 10  
 supported 10  
**connection request** 15  
**connection size** 16  
 calculation 17  
**connection tab** 21  
**connection type** 9

**Consumed** 50  
**consumed I/O assembly** 49  
**Controller Organizer** 23  
 pane 25  
**controller tags** 25  
 option 25  
**ControlLogix** 9

## D

**data**  
 alignment 13  
 array 41  
 assembly 42  
 boundaries 15  
 exchange 9  
 headers 10  
 multi-byte 41  
 SINT 24  
 values 41  
**data alignment** 13, 18, 22  
**data assemblies** 52  
**data assembly** 42  
**data boundaries** 15  
**data headers** 10  
**data structure** 15  
**different**  
 connection styles 10  
**direct connections** 9  
**discrete**  
 modules 39  
**discrete diagnostic input**  
 sixteen-channel 50  
**discrete I/O** 9  
**discrete input** 41, 42, 43  
 eight-channel 43  
 four-channel 42  
 two-channel 41  
**discrete input/output**  
 eight-channel  
 configurable 51  
**discrete output** 44, 46, 47  
 eight-channel 47, 48  
 four-channel 46  
 sixteen-channel 51  
 two-channel 44, 45  
**double word** 14, 29  
 boundary 14  
**double word boundaries** 14

## E

**eight-channel** 43, 47  
 configurable discrete input/output modules  
 51  
 discrete input modules 43  
 discrete output modules 48  
 discrete output modules with status 47

**EtherNet/IP**  
 network 19  
 profile 23  
**EtherNet/IP profile**  
 generic 23  
**exchange**  
 data 9

## F

**fixed boundaries** 14  
**Fixed Size per Slot** 33  
**Fixed size per slot**  
 alignment 33  
**Forward\_Open service** 16  
**four-channel** 46  
 discrete diagnostic input modules 48  
 discrete input modules 42  
 discrete output modules 46  
 discrete output modules with status 46  
 relay and AC output modules 50

## H

**hardware**  
 add 23

## I

**I/O assemblies** 51  
**I/O configuration** 23  
**I/O data** 9, 14  
**I/O module**  
 analog and specialty 40  
 configuration 26  
 discrete 39  
**I/O modules** 9  
**I/O packet** 14  
**input**  
 tag 25  
**input assemblies** 42  
**input data**  
 SINT 24  
**input modules**  
 discrete 41, 42, 43  
**insert connection** 20  
**intelligent tags** 23

## L

**layout** 41  
**least significant byte** 41  
**Listen-Only**  
 connections 10, 21  
 originators 9  
**little endian** 26, 41

**M**

**minimal** 15  
**Monitor tag**  
     C tag 25  
     I tag 25  
     O tag 25  
**Monitor tags** 25  
**most significant byte** 41  
**Multicast** 22  
**multiple originators** 10

**O**

**O-->T** 17  
**O2T** 22  
**order**  
     first 41  
     last 41  
     sequential 41  
**ordering** 41  
     method 41  
**Originator to Target** 10  
**originators**  
     multiple 10  
**output**  
     consumed 52  
     tag 25  
**output assembly** 52

**P**

**packet size**  
     limitation 15  
**pane** 23  
**Point to Point** 22  
**Produced** 50  
**produced assemblies** 49, 52  
**profile**  
     EtherNet/IP 23  
**properties**  
     connection 20

**R**

**Rack Optimized** 9  
     connections 9, 10  
     direct connections 9  
**relay output**  
     two-channel 49, 50  
**Remove and Insert Under Power** 10  
**Requested Packet Interval** 21  
**RIUP** 10  
**RSLogix5000** 23  
**RSNetWorx** 15, 16, 19, 21  
**RSNetWorx for EtherNet/IP** 19  
**Run/Idle header** 21

**S**

**scanlist configuration** 20  
**SINT**  
     data 24  
     input data 24  
**sixteen-channel**  
     discrete diagnostic input modules 50  
     discrete output modules 51  
**Size**  
     Consumed 39  
     Produced 39  
**size**  
     connection 16  
**Size per Slot** 14  
**specialty I/O modules** 40  
**Status header** 9, 10, 11  
     64-bit 9  
**status header**  
     optional 14, 16, 17, 24  
**supported**  
     connection points 10

**T**

**T-->O** 17  
**T2O** 22  
**tag arrays**  
     unstructured 23  
**Target to Originator** 10  
**two-channel** 41, 44  
     discrete Input modules 41  
     discrete output modules 45  
     discrete output modules with status 44  
     relay and AC output modules 49

**U**

**unstructured tag arrays** 23

**V**

**values**  
     data 41

**W**

**word** 14, 29  
**word boundaries** 14  
**words** 21





## Rockwell Automation Support

Use the following resources to access support information.

<b>Technical Support Center</b>	Knowledgebase Articles, How-to Videos, FAQs, Chat, User Forums, and Product Notification Updates.	<a href="https://rockwellautomation.custhelp.com/">https://rockwellautomation.custhelp.com/</a>
<b>Local Technical Support Phone Numbers</b>	Locate the phone number for your country.	<a href="http://www.rockwellautomation.com/global/support/get-support-now.page">http://www.rockwellautomation.com/global/support/get-support-now.page</a>
<b>Direct Dial Codes</b>	Find the Direct Dial Code for your product. Use the code to route your call directly to a technical support engineer.	<a href="http://www.rockwellautomation.com/global/support/direct-dial.page">http://www.rockwellautomation.com/global/support/direct-dial.page</a>
<b>Literature Library</b>	Installation Instructions, Manuals, Brochures, and Technical Data.	<a href="http://www.rockwellautomation.com/global/literature-library/overview.page">http://www.rockwellautomation.com/global/literature-library/overview.page</a>
<b>Product Compatibility and Download Center (PCDC)</b>	Get help determining how products interact, check features and capabilities, and find associated firmware.	<a href="http://www.rockwellautomation.com/global/support/pcdc.page">http://www.rockwellautomation.com/global/support/pcdc.page</a>

## Documentation Feedback

Your comments will help us serve your documentation needs better. If you have any suggestions on how to improve this document, complete the How Are We Doing? form at [http://literature.rockwellautomation.com/idc/groups/literature/documents/du/ra-du002\\_-en-e.pdf](http://literature.rockwellautomation.com/idc/groups/literature/documents/du/ra-du002_-en-e.pdf).

Rockwell Automation maintains current product environmental information on its website at <http://www.rockwellautomation.com/rockwellautomation/about-us/sustainability-ethics/product-environmental-compliance.page>.

Allen-Bradley, Rockwell Software, and Rockwell Automation are trademarks of Rockwell Automation, Inc.

Trademarks not belonging to Rockwell Automation are property of their respective companies.

Rockwell Otomasyon Ticaret A.Ş., Kar Plaza İş Merkezi E Blok Kat:6 34752 İçerenköy, İstanbul, Tel: +90 (216) 5698400

**[www.rockwellautomation.com](http://www.rockwellautomation.com)**

### Power, Control and Information Solutions Headquarters

Americas: Rockwell Automation, 1201 South Second Street, Milwaukee, WI 53204-2496 USA, Tel: (1) 414.382.2000, Fax: (1) 414.382.4444

Europe/Middle East/Africa: Rockwell Automation NV, Pegasus Park, De Kleetlaan 12a, 1831 Diegem, Belgium, Tel: (32) 2 663 0600, Fax: (32) 2 663 0640

Asia Pacific: Rockwell Automation, Level 14, Core F, Cyberport 3, 100 Cyberport Road, Hong Kong, Tel: (852) 2887 4788, Fax: (852) 2508 1846

Publication 1734-UM016B-EN-P - November 2016

Supersedes Publication 1734-UM016A-EN-P - October 2010

Copyright © 2016 Rockwell Automation, Inc. All rights reserved.