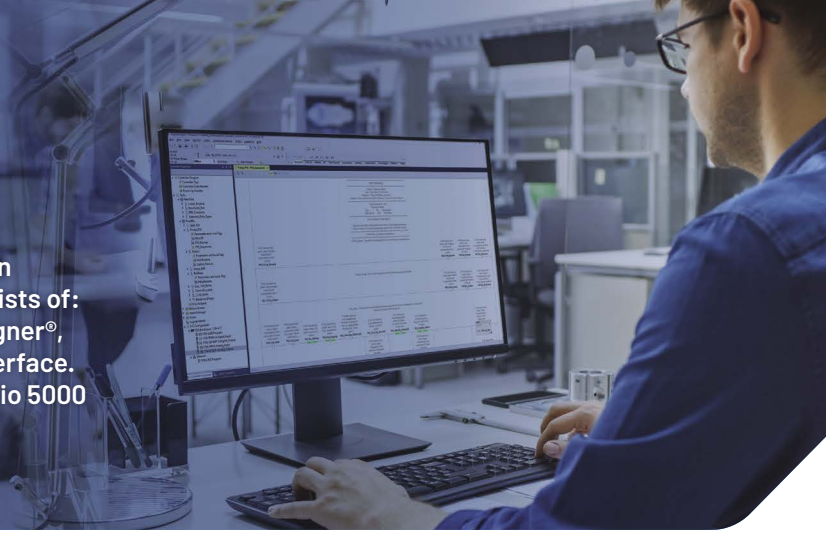


Studio 5000

Ordering guide

The Studio 5000® design environment is a family of design products for Logix and PanelView™ solutions, and it consists of: Studio 5000® Logix Emulate™, Logix Designer, View Designer®, Architect®, Application Code Manager and Simulation Interface. This ordering guide will help you to determine which Studio 5000 software edition is best suited for your needs.



Before you begin

Here are key considerations for you to keep in mind:

- 1 The edition you select for Studio 5000 will contain the matching edition for the Studio 5000 Logix Designer® application.
- 2 The support and functionality of your controller will determine the edition you need for Logix Designer, and therefore Studio 5000.
- 3 Logix Designer licenses are concurrent and entitle you to software downloads and activation of the version available at your time of purchase – as well as versions back to 20.05 by default.
- 4 Editions are available in Lite, Standard and Professional. You can customize each edition by including additional functionality.
- 5 Editions are designed to use the highest functionality first. Meaning, if Lite, Standard, and Professional licenses are available on the FactoryTalk® Activation server, Studio 5000 will select the Professional edition.

STEP 1

Studio 5000 ordering guide

Selecting the right edition is an important decision. Your first step is to apply the key considerations and determine which edition works best for you.

	LITE EDITION	STANDARD EDITION	PROFESSIONAL EDITION
Controllers supported	CompactLogix™, Compact GuardLogix® Families	CompactLogix, ControlLogix®, Compact GuardLogix, GuardLogix Families	CompactLogix, ControlLogix, Compact GuardLogix, GuardLogix Families
Visualization	Studio 5000® View Designer™	Studio 5000 View Designer	Studio 5000 View Designer
RSLinx® Classic	Lite included	Lite included	Lite included
FactoryTalk® Linx	Included	Included	Included
FactoryTalk® Linx Gateway	Available separately	Available separately	Available separately
Studio 5000 Architect®	Available separately	Included	Included

Package add-ons

These options populate in the commerce portal once you've made your package selection.

	LITE EDITION	STANDARD EDITION	PROFESSIONAL EDITION
VIRTUAL DESIGN			
Studio 5000® Logix Emulate™	Not available	Available separately	Included
Studio 5000 Logix Emulate for Operator Training	Available separately	Available separately	Available separately
Simulation Interface Developer	Available separately	Available separately	Available separately
Simulation Interface Run-time	Available separately	Available separately	Available separately
Logix Designer Data Exchange	Not available	Not available	Included
PROGRAMMING EDITORS			
Ladder Diagram (LD)	Included	Included	Included
Function Block Diagram (FBD) and Drive control blocks	Included	Upload/download included, Editor available separately	Included
Structured Text (ST)	Included	Upload/download included, Editor available separately	Included
Sequential Function Chart (SFC) ¹	Included	Upload/download included, Editor available separately	Included
GuardLogix Safety Editor	Included	Upload/download included, Editor available separately	Included
PhaseManager™	Upload/download included, Editor available separately	Upload/download included, Editor available separately	Included
SequenceManager™	Upload/download included, Editor available separately	Upload/download included, Editor available separately	Included
Multi Language Pack ²	Not available	Available separately	Not available
Full Pack ³	Not available	Available separately	Not available
RSNetwork™ Connect to ControlNet, DeviceNet or Ethernet	Available separately	Available separately	Included

¹ The Structured Text editor option is required to program SFC Actions and SFC Transitions using the Structured Text language.

² Multi Language Pack is a discounted bundle offering that contains FBD, ST and SFC.

³ Full Pack is a discounted bundle offering that contains FBD, ST, SFC, Safety, PhaseManager and SequenceManager.

Supporting packages

Subscriptions available separately are accessible from the commerce portal.

Visit <https://commerce.rockwellautomation.com/rockwell/en/USD/>.

	LITE EDITION	STANDARD EDITION	PROFESSIONAL EDITION
LIBRARY MANAGEMENT			
Studio 5000 Application Code Manager Lite Edition	Included	Included	Included
Studio 5000 Application Code Manager Standard Edition	Subscription available separately	Subscription available separately	Subscription available separately
LICENSE-BASED CONTENT PROTECTION			
Note: Password based protection, and FactoryTalk Security Server Support (FTSP) are included in all editions of Studio 5000 Logix Designer. Logix Content Protection allows for secure control of the access and execution of your Logix program.			
Studio 5000 License Portal	Subscription available separately	Subscription available separately	Subscription available separately
Studio 5000 Source Protection stick	Available separately	Available separately	Available separately
Controller Execution Protection SD card	Available separately	Available separately	Available separately

STEP 4

Subscription or Perpetual License? Your choice.

You must decide whether a subscription or a perpetual license will work best for you. A subscription is a timed license that supports modifying your software edition, add-ons, etc. A perpetual license is a single purchase for an edition of software whose license does not expire, and it includes the first year of software support. After the first year, support must be maintained separately to get new versions. [Learn more.](#)

STEP 5

Build your cart

Last but not least, it is time to build your cart. If you are purchasing perpetual licenses or subscriptions, both are bought in one place at our [commerce portal](#).

Toolkit owners may issue themselves a temporary activation for all versions. However, if you do not own a Toolkit, a one-year subscription for all versions is available for purchase on the Studio 5000 commerce page.



Connect with us. [f](#) [@](#) [in](#) [t](#)

rockwellautomation.com — expanding **human possibility**[®]

AMERICAS: Rockwell Automation, 1201 South Second Street, Milwaukee, WI 53204-2496 USA, Tel: (1) 414.382.2000, Fax: (1) 414.382.4444

EUROPE/MIDDLE EAST/AFRICA: Rockwell Automation NV, Pegasus Park, De Kleetlaan 12a, 1831 Diegem, Belgium, Tel: (32) 2 663 0600, Fax: (32) 2 663 0640

ASIA PACIFIC: Rockwell Automation, Level 14, Core F, Cyberport 3, 100 Cyberport Road, Hong Kong, Tel: (852) 2887 4788, Fax: (852) 2508 1846

CompactLogix, ControlLogix, expanding human possibility, FactoryTalk, GuardLogix, PanelView, PhaseManager, RSLinx, RSNetWorx, SequenceManager, Studio 5000, Studio 5000 Architect, Studio 5000 Logix Designer, Studio 5000 Logix Emulate and Studio 5000 View Designer are trademarks of Rockwell Automation, Inc.

Trademarks not belonging to Rockwell Automation are property of their respective companies.

Publication 9324-QR001I-EN-P - August 2020 | Supersedes Publication 9324-QR001H-EN-P - May 2020

Copyright © 2020 Rockwell Automation, Inc. All Rights Reserved. Printed in USA.